



DSD STARS

2025
Maple Tapping Equipment

Our dedicated team who care ...



Josée Poudrier
Customer service
418 338-3507 #264



Sylvie Lussier
Customer service
418 338-3507 #256



Stéphan Lessard
Sales Director
418 338-3507 #255



Roberto Vachon
Consultant STARS
418 281-0977



Steve Vachon
Consultant STARS
418 814-3503

CANADA Branches

DSD STARS - Thetford

Christina Pelletier
1649, boulevard Frontenac Est,
Thetford Mines, QC, G6G 6P6
Tel.: 418 755-7827
thetford@dstdstars.com

Installation et équipements d'érablière KL

Kaven Lavallée
13, rue de la Chute,
Beaumont, QC, G0R 1C0
Tel.: 418 835-8383
info@ieklinc.com

Mécanipro inc.

Patrick Bilodeau
650, rue Principale,
Saint-Sylvestre, QC, G0S 3C0
Tel.: 418 596-2335
info@mecanipro.com

DSD STARS - Auclair

Magalie Lavoie
577, rue Des Pionniers,
Auclair, QC, G0L 1A0
Tel.: 418 899-0555
auclair@dstdstars.com

René Ouellet et Fils

René Ouellet
Tel.: 418 714-4666
Anne Michaud
Tel.: 581 337-1558
237, rue Principale,
Saint-Pierre-de-Lamy, QC, G0L 4B0
reneouelletetfils@gmail.com

Sirois acériculture et foresterie

Lucien Sirois
824, rue Victoria,
Edmundston, NB, E7E 1P7
Tel.: 506 737-3898
siroisacerifor2018@hotmail.com

BHR Experts

Maxime Hallé and Sabrina Jacques
70, chemin Lachance,
Audet, QC, G0Y 1A0
Tel.: 819 583-5330
info@bhrexperts.com

Produits de l'Érable St-Ferdinand B

Bruno Boutin
185, route 165,
Irlande, QC, G6H 2N7
Tel.: 418 428-9381
proderab@ivic.qc.ca

Les Équipements d'Érablières Stars

Christian Gagnon
12, rue Gingras, (door 6)
Laurierville, QC, G0S 1P0
Tel.: 819 362-5549
lesequipementserablieresstars@outlook.com

CANADA Authorized Dealers

Acerbrix inc.

Christian Rail
L'Assomption, QC
Tel.: 514 915-4735
equipementsacerbrix@gmail.com

Les Perron

Alexandre Blais
Tel.: 819 347-4297
Yves Fauteux
Tel.: 819 347-5623
Bury, QC
alexblais1978@icloud.com

BCC Acéricole inc.

Tel.: 367 383-6774
Pont-Rouge, QC
entreprisesbcc@gmail.com
www.entreprisesbcc.ca

Acer RB Travaux Acéricoles

Rémi Mercier
Saint-Marcel, QC
Tel.: 418 710-0264
remi.mercier.92@gmail.com

L'Érablière du Montagnard

Luc Pillon
Saint-André-Avellin, QC
Tel.: 819 983-3817
fabricationlp@hotmail.com

Pefferlaw Creek Farms

John Tomory, Ben Tomory
Uxbridge, ON
Tel.: 289 221-5265
john.tomory@pcfarms.ca

Les Entreprises JF Allaire

Jean-Félix Allaire
Saint-Ulric, QC
Tel.: 418 556-6950
jeanfelixa2@outlook.com

Services acéricoles Martin Trudeau

Martin Trudeau
Sainte-Christine, QC
Tel.: 438 377-9273
info@servicesacericoles.ca
www.servicesacericoles.ca

MNL Equipments

Nicolas Lamoureux
Tel.: 613 872-0125
Michel Lamoureux
Tel.: 613 678-2459
Lucie Lamoureux
Tel.: 613 872-2459
Vankleek Hill, ON
mnlequipments@gmail.com

the success of your business



Kevin Port
Delivery



Magalie Lavoie
Manager DSD STARS-Auclair
418 899-0555



H el ene Viel
Consultant DSD STARS-Auclair
418 899-0555



Christina Pelletier
Manager DSD STARS-Thetford
418 755-7827 #410

USA Authorized Dealers

Hunt's Farm Supply LLC

Palmer Hunt
Jeffersonville, VT
Tel.: 802 730-3276
huntsibavt@gmail.com

Little Man Syrup LLC

Jessica White
Birnamwood, WI
Tel.: 715 216-2816
littlemansyrup@hughes.net

Adirondack Heritage Maple

Myron and Joshua Zehr
Lowville, NY
Tel.: 315 212-3663
mylufarm@hotmail.com

Van Pelt's Maple Product LLC

Franklin Van Pelt
Columbiana, OH
Tel.: 330 314-2422
fjv8@icloud.com

USA Branches

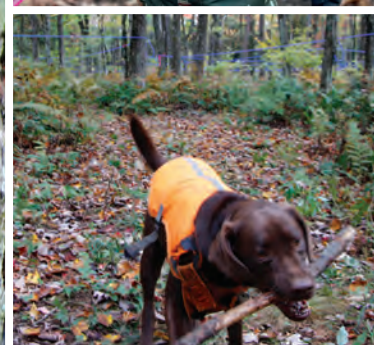
Smoky Lake Maple Products LLC

Jim and Angela Schumacher
208 N 12th St,
Hilbert, WI, 54129
Tel.: 920 202-4500
angela@smokylakemaple.com

USA Distributors

Stephane Darveau

Tel.: 819 571-2778
darveaumaple@hotmail.com





Together to serve you better



David Bédard
General Manager
TÔLE INOX

Sonia Vachon
President
DSD International
TÔLE INOX
BHR Experts

Léandre Vachon
V.P. Research &
Development

Sylvain Lessard
Project Manager

DSD International

Proud to serve you since 1987.

Plastics - injection and extrusion.
Manufacturing of sap spouts, tubing,
saddles, connectors and other
DSD STARS maple tapping products.

**TÔLE
INOX**

Manufacturing of wood, oil
and electric evaporators, pans,
stainless steel tanks and other
maple tapping equipments.

BHR
EXPERTS

Manufacturing of releasers,
reverse slope, transfer tanks,
WÔ vap! vapor trap and other
maple tapping equipments.

DSD STARS

Connectors for Tubing	p.6	Reverse slope releasers	p.48
Sap Spouts	p.7-9	Accessories BHR Experts	p.49
Sap Spout Adapters	p.10-11	ECOVAP evaporator	p.50-51
End of line Markers, Drop lines	p.12	Evaporators (HP, wood, oil)	p.52-57
Tubing	p.13	Stainless Steel Tanks	p.58
Tubing Saddles	p.14-15	Pans, Water jacket Tanks	p.59
Mainline	p.16-17	Stainless Steel Products	p.60
Accessories for mainline	p.18-20	Tôle Inox Showroom	p.61
Drill bits, Tools	p.21	Filter press	p.62
Stainless Steel Fittings	p.22-24	Tools, Pliers, Extractors, Apron, Back reel winder, Spout remover	p.63-69
Gray PVC	p.25-26	Measuring tools	p.70
White PVC	p.27-29	Drums and accessories	p.71
Camlock Adapters	p.30	Plastic Tanks	p.71
Quick clamp fittings SS, Connecting System	p.31	Transformation, Insulation	p.72
Pumps	p.32-33	Filtration, Defoamers	p.73
Pumps Parts	p.33	Bottling	p.74
Water Pump	p.34	Containers	p.75-76
Gauges, Oil, Silicone	p.35	Packaging	p.77
Collars, Valves	p.36	Brushes	p.77
Sugar bush management system	p.37	Cleaners (pans, tubing, SS, membranes)	p.78
Releasers, Traps, Tanks	p.38-46	Terms and conditions	p.79
WÔ vap! Water and Vapor traps	p.47		

CONNECTORS

FOR TUBING

FOR 5/16" TUBING



PATENTED

T-Pin Connector

20A01-313-313-K \$0.28



PATENTED

T-Cap Long Connector

20A14-313-313-K \$0.39



DSD
Exclusive

PATENTED

End of Line T-Pin Long Cap Connector

20A18-313-313-K \$0.37



PATENTED

Wire Union

FTU-K \$0.19



PATENTED

Wire Union 3/16"-5/16"

FTU316-516-K \$0.22



PATENTED

90° Spout Adapter

Black FTA90-K \$0.18
Orange FTA90-OR \$0.20



PATENTED

Wire Union Slider

20A03-188-313-K \$0.69



PATENTED

End of Line Slider

20A05-188-313-K \$0.69



Line Pull Hook

20A19-188-313-K \$0.29



PATENTED

Multifunction Collar

COLM516-K \$0.10



Universal Steri-Vial

15D04-001 \$0.25

FOR 3/16" TUBING



PATENTED

T-Pin Connector

FTT316-K \$0.28



Line Pull Hook

20A19-188-313-K \$0.29



PATENTED

Wire Union

FTU316-K \$0.22



PATENTED

Wire Union 3/16"-5/16"

FTU316-516-K \$0.22



PATENTED

Wire Union Slider

20A03-188-313-K \$0.69



PATENTED

End of Line Slider

20A05-188-313-K \$0.69



PATENTED

End Line

FTEL316-K \$0.35

Prices are subject to change without notice.

Limited warranty : 5 years against defects in materials and workmanship.

90° SAP SPOUT

90° SAP SPOUTS · THIN WALLS



For 5/16" tubing

Ø 1/4"		PATENTED
TRANSLUCENT - Polycarbonate		
Clear	SP90-250-C	\$0.21
Blue	SP90-250-B	\$0.21
Gray	SP90-250-G	\$0.21



For 3/16" tubing

Ø 0.225"		PATENTED
TRANSLUCENT - Polycarbonate		
Clear	15A06-225-316-C	\$0.20
Blue	15A06-225-316-B	\$0.20
Gray	15A06-225-316-G	\$0.20



For 5/16" tubing

Ø 1/4"		PATENTED
OPAQUE - Nylon		
Blue	SP90-250-PB	\$0.24
Black	SP90-250-PK	\$0.24
Gray	SP90-250-PG	\$0.24
Green	SP90-250-PGN	\$0.24



For 3/16" tubing

Ø 0.225"		PATENTED
OPAQUE - Nylon		
Blue	15A06-225-316-PB	\$0.24
Black	15A06-225-316-PK	\$0.24
Gray	15A06-225-316-PG	\$0.24
Green	15A06-225-316-PGN	\$0.24



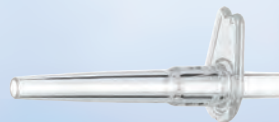
STRAIGHT SAP SPOUTS

- The most efficient on the market
- Flexible, will adapt to the tap hole
- Drastically reduces the effect of compartmentalization
- Using DSD STARS sap spouts or adapters allows a healthy maple to heal in the same year
- Micro leak free (even on high vacuum)
- BPA-free, UV Protection, FDA approved
- (Translucent) Made of XB2
- Keep the taps moist at all times for superior harvest

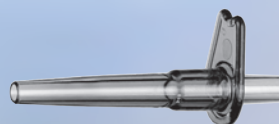
For 3/16" tubing

Ø 3/16"

TRANSLUCENT - XB2		
Clear	SP316-XC	\$0.19
Blue	SP316-XB	\$0.19
Gray	SP316-XG	\$0.19
Pink	SP316-XP	\$0.19



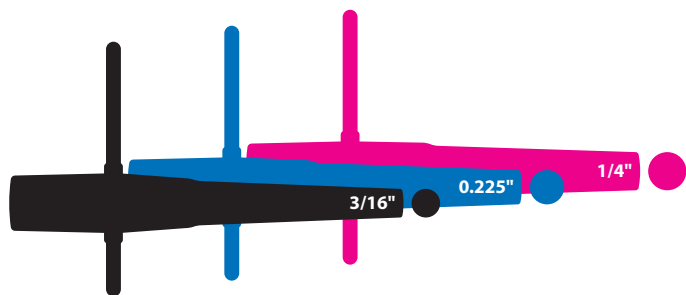
PATENTED



Limited warranty : One (1) year against defects in materials and workmanship.

Prices are subject to change without notice.

THIN WALLED



For 5/16" tubing
with or without 90° Spout Adapter

Ø 3/16"		PATENTED
OPAQUE - Nylon		
Blue	SP316-516-PB	\$0.24
Black	SP316-516-PK	\$0.24
Gray	SP316-516-PG	\$0.24

Ø 3/16"		PATENTED
TRANSLUCENT - XB2		
Clear	SP316-516-XC	\$0.19
Blue	SP316-516-XB	\$0.19
Gray	SP316-516-XG	\$0.19
Pink	SP316-516-XP	\$0.19



Ø 1/4"		PATENTED
OPAQUE - Nylon		
Blue	SP250-516-PB	\$0.24
Black	SP250-516-PK	\$0.24
Gray	SP250-516-PG	\$0.24

Ø 1/4"		PATENTED
TRANSLUCENT - XB2		
Clear	SP250-516-XC	\$0.20
Blue	SP250-516-XB	\$0.20
Gray	SP250-516-XG	\$0.20
Pink	SP250-516-XP	\$0.20

Ø 0.225"		PATENTED
TRANSLUCENT - XB2		
Clear	SP225-XC	\$0.20
Blue	SP225-XB	\$0.20
Gray	SP225-XG	\$0.20
Pink	SP225-XP	\$0.20



**No need to
cut your
drops**

Use the **FTA90
90° Spout Adapter**
with the following
Sap Spouts :
- SP316-516
- SP225
- SP250-516

SAP SPOUT

- Flexible, will adapt to the tap hole
- 0.225" Diameter, Thin walled
- Drastically reduces the effect of compartmentalization
- Prevents the insertion of a contaminated spout which could damage the maple
- Avoid annual cutting of the drop line
- Used with 19/64" or 5/16" sap spouts (model SPA225 and model 15B01-225-313)
- Used with 1/4" sap spouts (model 15B01-225-250)



0.225" ADAPTER for 19/64" or 5/16" sap spout



FOR 19/64" OR 5/16" SAP SPOUT

TRANSLUCENT - XB2		
Clear	SPA225-XC	\$0.20
Blue	SPA225-XB	\$0.20
Gray	SPA225-XG	\$0.20
Pink	SPA225-XP	\$0.20

PATENTED



Spout adapter extractor

35A03-71292	
35A03-71296	DSD

Prices are subject to change without notice.

ADAPTERS

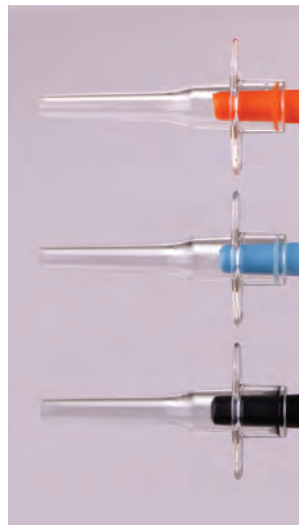
0.225" ADAPTER for 0.225" or 1/4" sap spout



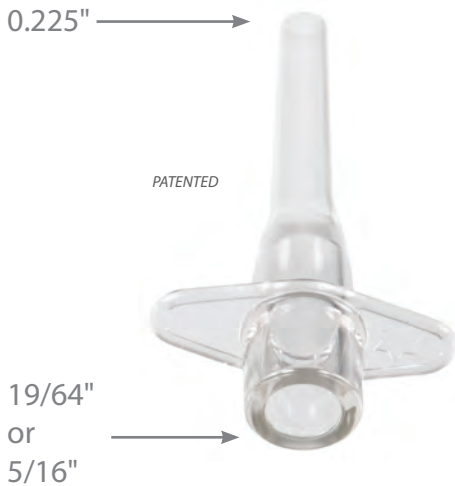
FOR 0.225" OR 1/4" SAP SPOUT

TRANSLUCENT - XB2

Clear	15B01-225-250-XC	\$0.20
Blue	15B01-225-250-XB	\$0.20
Gray	15B01-225-250-XG	\$0.20
Pink	15B01-225-250-XP	\$0.20



0.225" ADAPTER for 19/64" or 5/16" sap spouts



FOR 19/64" OR 5/16" SAP SPOUT

TRANSLUCENT - XB2

Clear	15B01-225-313-XC	\$0.20
Blue	15B01-225-313-XB	\$0.20
Gray	15B01-225-313-XG	\$0.20
Pink	15B01-225-313-XP	\$0.20



Extend the life
your old sap spouts
by using 0.225"
adapters *

*Other brands of sap spouts fit with our adapters, provided they meet the required dimensions. Consult your DSD STARS dealer to select the adapters size for your existing sap spouts.



MARKERS

- High visibility, avoids sap from going around the tree

End of Line Marker Tubing

Orange	TB316-SR-5000RO	3/16"	500' Roll
	TB516-SR-5000RO	5/16"	
Green	TB316-SR-500GNO	3/16"	
	TB516-SR-500GNO	5/16"	



DROP LINES



Pre-cut Straight Drop Lines

Ø 3/16"

Semi-Flexible

3/16"	32"	10E06-32	Pkg 25
3/16"	36"	10E06-36	Pkg 25
3/16"	40"	10E06-40	Pkg 25

Flexible

3/16"	32"	10E05-32	Pkg 25
3/16"	36"	10E05-36	Pkg 25
3/16"	40"	10E05-40	Pkg 25

Ø 5/16"

Semi-Flexible

5/16"	32"	10E02-32	Pkg 25
5/16"	36"	10E02-36	Pkg 25
5/16"	40"	10E02-40	Pkg 25

Flexible

5/16"	32"	10E01-32	Pkg 25
5/16"	36"	10E01-36	Pkg 25
5/16"	40"	10E01-40	Pkg 25

More options available

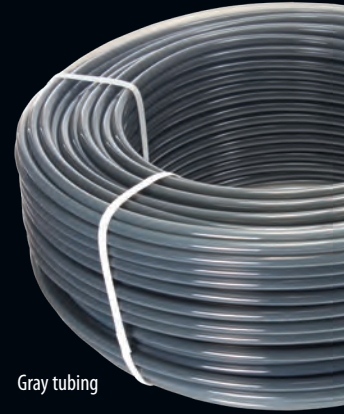


DSD STARS TUBING

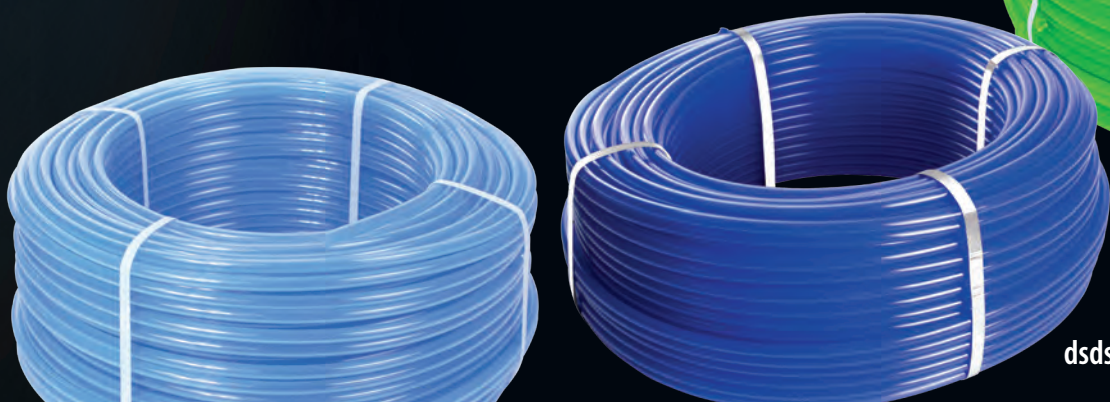
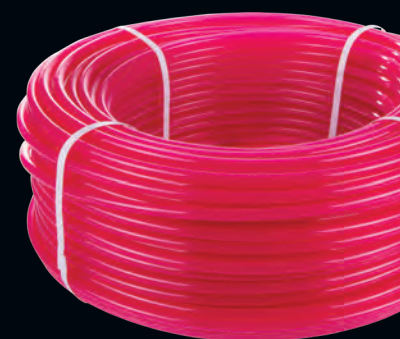
- **Constant diameter over its entire length**
- **Very smooth finish inside**
Makes cleaning easier and reduces the proliferation of bacteria
- **Food grade**
- **Easy Installation : malleable even at -40°C / -40°F**
- **Resistant to pressure & vacuum**
- **Superior adhesion to sap spouts and fittings**
- **UV resistant**



Light Gray tubing



Gray tubing



Ø 3/16" Tubing

Flexible-15	TB316-F	15 year warranty	500' Roll
Semi-Flexible-15	TB316-SF	15 year warranty	500' Roll
Semi-Rigid-15	TB316-SR	15 year warranty	500' Roll

3/16" Tubing - Available Colors :
blue, light blue, gray or light gray or green*

* green : only available in semi-flexible

Ø 5/16" Tubing

Flexible-15	TB516-F	15 year warranty	500' Roll
Semi-Flexible-15	TB516-SF	15 year warranty	500' Roll
Semi-Rigid-15	TB516-SR	15 year warranty	500' Roll
Rigid-5	TB516-R	5 year warranty	500' Roll

5/16" Tubing - Available Colors :
blue, light blue, gray, light gray, green¹, orange², pink³

¹ green : only available in semi-flexible and semi-rigid

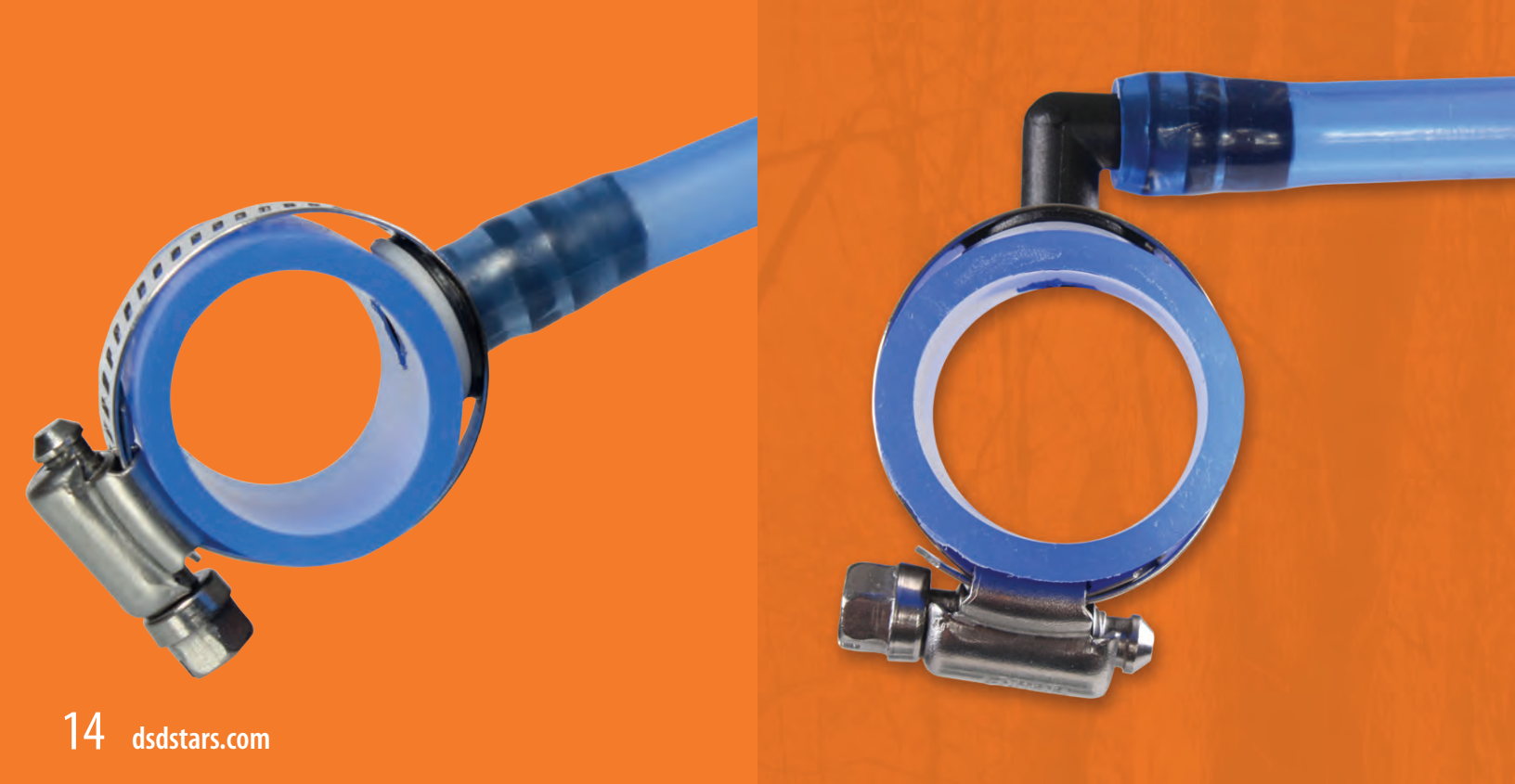
² orange: only available in semi-rigid

³ pink: only available in semi-rigid

Limited decreasing warranty against defects in material or workmanship.
See complete warranty at www.dsdstars.com

REVOLUTIONARY

SADDLES



**Improved
Base & Seal**

**For high vacuum
and high pressure**

**Easy, fast &
complete cleaning,
reducing bacteria**

- Guarantees a sap harvest of superior quality and free of debris for your pumps

**Micro leak free,
super durable**

- Reversible double sided seal
- Adapts to 5/16" to 31/64" holes
- Made of elastomer.
- Use on one side for any new installation or the other side to seal existing holes in your mainlines

**Innovative
pre-cut saddle**

- Ultra rugged design
- Made of 304 stainless steel grade
- Good for numerous years of use.

**Simplified
installation**

- Only one saddle is needed

90° elbow or straight connector

- 90° elbow : can be positioned in all directions to facilitate installation (before tightening)

I am a maple equipment installer. I love DSD STARS saddles. They are very easy to install and moreover offer my customers peace of mind since they are micro-leak free. I highly recommend them.

Daniel Letourneau, Owner
St-Sylvestre, QC
34,000 Taps

Limited warranty : 5 years against defects in materials and workmanship.



Tubing saddle 90° - 5/16" PATENTED

Connector and elastomer seal included

For tube :

1/2"	20B01-050	\$2.25
3/4"	20B01-075	\$2.35
1"	20B01-100	\$2.50
1 1/4"	20B01-125	\$2.60
1 1/2"	20B01-150	\$2.60
2"	20B01-200	\$2.70



Cap saddle PATENTED

Connector and elastomer seal included

For tube :

1/2"	20B04-050	\$2.25
3/4"	20B04-075	\$2.35
1"	20B04-100	\$2.50
1 1/4"	20B04-125	\$2.60
1 1/2"	20B04-150	\$2.60
2"	20B04-200	\$2.70



Straight tubing saddle - 5/16" PATENTED

Connector and elastomer seal included

For tube :

1/2"	20B02-050	\$2.25
3/4"	20B02-075	\$2.35
1"	20B02-100	\$2.50
1 1/4"	20B02-125	\$2.60
1 1/2"	20B02-150	\$2.60
2"	20B02-200	\$2.70



Straight tubing saddle - 3/16" PATENTED

Connector and elastomer seal included

For tube :

1/2"	20B03-050	\$2.25
3/4"	20B03-075	\$2.35
1"	20B03-100	\$2.50
1 1/4"	20B03-125	\$2.60
1 1/2"	20B03-150	\$2.60
2"	20B03-200	\$2.70



Straight Saddle Connector PATENTED

SEL316-K	\$0.35
SEL516-K	\$0.35



Double Sided Seal PATENTED

SEL-SEAL \$0.24

Reversible elastomer double sided seal. Seals holes : 5/16" to 31/64"



90° Saddle Elbow Connector PATENTED

SEL-ELB-K	\$0.35
-----------	--------



Cap for Saddle (plug) PATENTED

SEL-CAP-K	\$0.35
-----------	--------

Prices are subject to change without notice.



DSD STARS-10 LDPE Mainline

Diameter	PSI	Product No	Warranty	Standard lengths	Maximum length
1/2"	125 PSI	TB050	10 year warranty	100' - 500' - 3000'	9000'
3/4"	125 PSI	TB075	10 year warranty	500' - 2500'	5500'
1"	125 PSI	TB100	10 year warranty	300' - 500' - 1000' - 1500'	7700'
1 1/4"	100 PSI	TB125	10 year warranty	300' - 500' - 1000'	4700'
1 1/2"	100 PSI	TB150	10 year warranty	300' - 500' - 1000'	3500'
2"	100 PSI	TB200	10 year warranty	100' - 200' - 500'	2000'
3"	100 PSI	TB300	10 year warranty	on demand	1000'

- **Customized mainline lengths available on demand.**
Conditions and fees may apply.

Mainline LDPE 10 year limited warranty*

Mainline HDPE 5 year limited warranty*

* Limited decreasing warranty against defects in material or workmanship. See complete warranty at www.dsdstars.com.



DSD STARS MAINLINE

- **High resistance tubing**
- **Constant diameter over its entire length**
- **Thicker wall** (Low density tubing)
- **Smooth inside**, simplifies cleaning and reduces proliferation of bacteria
- **Food grade**
- **Resistant to pressure & vacuum**
- **UV Resistant**



Low density <i>LDPE</i>	Lashed Mainline	High density <i>HDPE</i>
<ul style="list-style-type: none"> • More flexible • Easy installation • Very good resistance to bursting from frost 	<ul style="list-style-type: none"> • Diameter 3/4" to 1 1/2" 	<ul style="list-style-type: none"> • More rigide • Lighter



ACCESSORIES FOR MAINLINE



Wire

# 9 galvanized	50 lbs/rl (approx. 903')	30B01-09-50
# 12 galvanized	50 lbs/rl (approx. 1732')	30B01-12-50
# 14 galvanized	50 lbs/rl (approx. 2926')	30B01-14-50
# 8 high carbide galvanized	65 lbs/rl (approx. 1000')	30C01-08-65
# 9 high carbide galvanized	50 lbs/rl (approx. 1053')	30C01-09-50
# 12.5 high carbide galvanized	50 lbs/rl (approx. 1972')	30C01-12.5-50



Galvanized Wire Tie 18ga

Length	Prod #	Qty /roll	Suggested Mainline
5"	30A02-05	2 500	3/4"
6"	30A02-06	2 500	1"
7"	30A02-07	2 500	1 1/4"
8"	30A02-08	2 500	1 1/2"
10"	30A02-10	2 500	2"
12"	30A02-12	2 500	2"
14"	30A02-14	2 500	3"



for 2" x 2" wood beam



for 2" x 3" wood beam

Hybrid Stake base with insert for Wood Beam 2" x 2" or 2" x 3"

30Z02-1525-2020-PK50 50 un



Wire tie twister

35E01-001	Automatic
35E01-002	Manual

Twisting drill bit

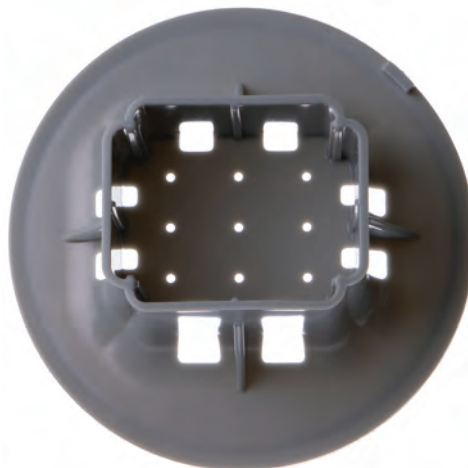
35A12-719991



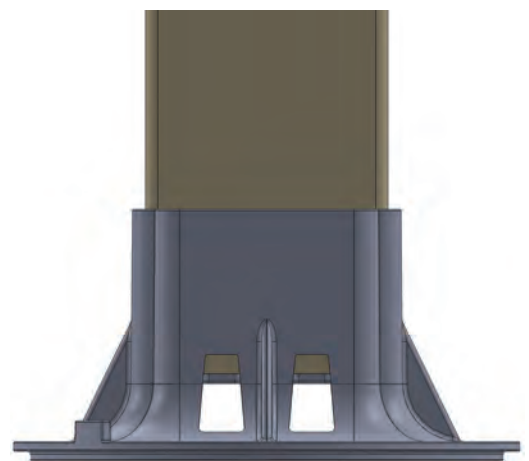
Stake Cramp 3/8" x 1"

30Z03-001-PK100 100 un

top view



side view



Prices are subject to change without notice.



- Maintains your wire in the middle of your mainline
- Reduces the risk of freezing

for mainline up to 1 1/2"

Mainline support

Mainline support screw hexagonal flange head included	50/pkg	30Z04-SUP	\$0.95/un
--	--------	-----------	-----------



Old method to support the mainline

The tie pulls the wire side ways of the mainline and ruins the tube alignment



ACCESSORIES FOR MAINLINE



Wire Splice (pkg 2)

# 8 X 24"	White	30D01-08
# 9 X 26"	Red	30D01-09
#10 X 26"	Black	30D01-10



Gripple tool "Torq"

Torq 35D01-001



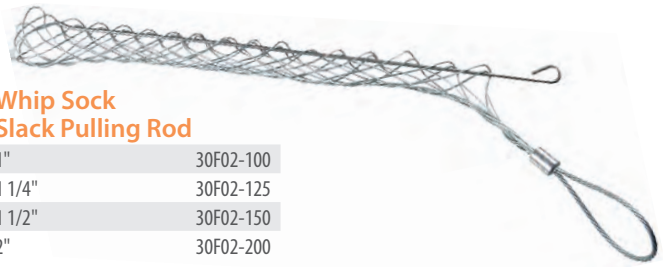
Gripple tool "Contractor"

Contractor 35D01-002



Whip Sock

3/4"	30F01-M075
1"	30F01-M100
1 1/4"	30F01-M125
1 1/2"	30F01-M150
2"	30F01-M200
3"	30F01-M300



Whip Sock Slack Pulling Rod

1"	30F02-100
1 1/4"	30F02-125
1 1/2"	30F02-150
2"	30F02-200



Wire Strainer

SS/Alu.	30M01-001
Galv./Zinc	30M01-002



Spring Loaded Tool for Wire Strainer

35F01-001	Use with 30M01-001
35F01-002	Use with 30M01-002



Gripple

T-Clip 14-10 GA 30E02-001



Tube for guy wire

1/2" TB050-1000R Orange 100'



Gripple

Medium	14-10 GA	30E01-001
Large	10-7.5 GA	30E01-002
Twisters	100/box	30E03-001





DRILL BITS

• Patented Fast spiral twist drill bits especially designed to for maple tree tapping

• Facilitates the extraction of wood residues

All of our drill bits are sharpened by Les Mèches Bolduc inc.



Drill bit holder tool

0.225"	35A12-719102-1
15/64"	35A12-719102
0.240"	35A12-719103-1
1/4"	35A12-719103
19/64"	35A12-719106
5/16"	35A12-719107



Drill bit stopper

19/64"	35A12-71912
--------	-------------



For mainline
triple lip used with battery drill
DRBP-5/16

Fast spiral twist drill bits especially designed to drill the mainlines. Facilitates the extraction of plastic residues.

PATENTED

Suggested drill bits

Product #	Sap Spout	DSD drill bits	Bolduc
SP316	straight .187"	35M01-203S	35M01-187S
SP316-115-225	115° .225"	35M01-240S or 35M03-234S	35M01-225S
SP316-516	straight .187"	35M01-203S	35M01-187S
SP225	straight .225"	35M01-240S or 35M03-234S	35M01-225S
SP115-225	115° .225"	35M01-240S or 35M03-234S	35M01-225S
SP250-516	straight .250"	35M01-250S or 35M03-266S	
15A06-225-316	90° .225"	35M01-240S or 35M03-234S	35M01-225S
SP90-250	90° .250"	35M01-250S or 35M03-266S	

Product #	Adapter	DSD drill bits	Bolduc
SPA225 and 15B01	Adapter .225"	35M01-240S or 35M03-234S	35M01-225S

Taps

Ø Tap	Product #
0.187" (3/16")	35M01-187S
0.225"	35M01-225S
0.234" (15/64")	35M03-234S
0.234" (15/64") Short	35M04-234S
0.240"	35M01-240S
0.244" (6.2 mm)	35M01-244S
0.250" (1/4")	35M01-250S
0.250" (1/4") Short	35M04-250S
0.266" (17/64")	35M03-266S
0.297" (19/64")	35M03-297S
0.297" (19/64") Short	35M04-297S
0.298" (19/64")	35M01-298S
0.313" (5/16")	35M01-313S
0.313" (5/16")	35M03-313S

TOOLS



Installation tools

TTL-SP225	Straight sap spout & adapter	\$4.95
-----------	------------------------------	--------



- Repair your leaks without hitting the 2 pieces together so that they don't get stuck
- Use it at the end of the season to remove the spouts



Multifunctional Spout Remover

35A15-718408	Aluminum Handle & Steel Head	27"
35A15-718410	Aluminum Handle & Steel Head	48"



Rounded design at the back to better match the shape of the maple tree



15D01-002-PK50 for DSD bucket



15D01-001-PK50 for Metal bucket

Bucket & Hooks

BUC10L-B	Blue Bucket - 10L
BUC10L-CO-B	Blue cover for Bucket 10 L
15D01-001-PK50	Hooks metal bucket (50/pkg)
15D01-002-PK50	Hooks DSD bucket (50/pkg)



use it with double or single clamps

Installation tools

TTL-SP225	For installation of saddles
-----------	-----------------------------

STAINLESS STEEL FITTINGS



Threaded adapter

(mnpt x ins)	
1/2" x 1/2"	30K04-050-050
1/2" x 3/4"	30K04-050-075
3/4" x 1/2"	30K04-075-050
3/4" x 3/4"	30K04-075-075
3/4" x 1"	30K04-075-100
1" x 3/4"	30K04-100-075
1" x 1"	30K04-100-100
1" x 1 1/4"	30K04-100-125
1 1/4" x 1"	30K04-125-100
1 1/4" x 1 1/4"	30K04-125-125
1 1/4" x 1 1/2"	30K04-125-150
1 1/2" x 1"	30K04-150-100
1 1/2" x 1 1/4"	30K04-150-125
1 1/2" x 1 1/2"	30K04-150-150
1 1/2" x 2"	30K04-150-200
2" x 1 1/2"	30K04-200-150
2" x 2"	30K04-200-200
3" x 3"	30K04-300-300



Straight coupling

(ins x ins)	
1/2"	30K06-050
3/4"	30K06-075
1"	30K06-100
1 1/4"	30K06-125
1 1/2"	30K06-150
2"	30K06-200
3"	30K06-300



Reducer insert

(ins x ins)	
3/4" x 1/2"	30K03-075-050
1" x 3/4"	30K03-100-075
1 1/4" x 3/4"	30K03-125-075
1 1/4" x 1"	30K03-125-100
1 1/2" x 3/4"	30K03-150-075
1 1/2" x 1"	30K03-150-100
1 1/2" x 1 1/4"	30K03-150-125
2" x 1"	30K03-200-100
2" x 1 1/4"	30K03-200-125
2" x 1 1/2"	30K03-200-150
3" x 1 1/4"	30K03-300-125
3" x 2"	30K03-300-200

End of line hook cap



3/4"	30K10-075
1"	30K10-100
1 1/4"	30K10-125
1 1/2"	30K10-150
2"	30K10-200



Elbow welded 90°

(ins x ins)	
3/4"	30K01-075-90
1"	30K01-100-90
1 1/4"	30K01-125-90
1 1/2"	30K01-150-90
2"	30K01-200-90

Elbow welded 45°

(ins x ins)	
3/4"	30K01-075-45
1"	30K01-100-45
1 1/4"	30K01-125-45
1 1/2"	30K01-150-45
2"	30K01-200-45



"Y" threaded

(ins x mnpt x ins)	
on demand	



"Y" reducer threaded

(mnpt x ins x mnpt)	
on demand	



"T" fitting threaded

(ins x mnpt x ins)	
on demand	



Drain elbow

(ins x ins)	
1/2" x 1/2"	30K14-050-050
3/4" x 3/4"	30K14-075-075
1" x 1"	30K14-100-100

Tank Adaptors

dia x long	SHORT - 1 thread
3/4" x 3/4"	30K11-075-075
1" x 7/8"	30K11-100-088
1 1/4" x 1"	30K11-125-100
1 1/2" x 1"	30K11-150-100
2" x 1 1/8"	30K11-200-113
dia x long	LONG - 2 threads
1" x 1 3/8"	30K11-100-138
1 1/4" x 2"	30K11-125-200
1 1/2" x 2"	30K11-150-200
2" x 2 1/2"	30K11-200-250



"Y" fitting

(ins x ins)			
A	B	C	
1/2" x 1/2"	x 1/2"		30K07-050-050
3/4" x 3/4"	x 1/2"		30K07-075-050
3/4" x 3/4"	x 3/4"		30K07-075-075
1" x 1"	x 3/4"		30K07-100-075
1" x 1"	x 1"		30K07-100-100
1 1/4" x 1 1/4"	x 3/4"		30K07-125-075
1 1/4" x 1 1/4"	x 1"		30K07-125-100
1 1/4" x 1 1/4"	x 1 1/4"		30K07-125-125
1 1/2" x 1 1/2"	x 3/4"		30K07-150-075
1 1/2" x 1 1/2"	x 1"		30K07-150-100
1 1/2" x 1 1/2"	x 1 1/4"		30K07-150-125
1 1/2" x 1 1/2"	x 1 1/2"		30K07-150-150
2" x 2"	x 3/4"		30K07-200-075
2" x 2"	x 1"		30K07-200-100
2" x 2"	x 1 1/4"		30K07-200-125
2" x 2"	x 1 1/2"		30K07-200-150
2" x 2"	x 2"		30K07-200-200
3" x 3"	x 1 1/4"		30K07-300-125
3" x 3"	x 1 1/2"		30K07-300-150
3" x 3"	x 2"		30K07-300-200
3" x 3"	x 3"		30K07-300-300
(ins x mnpt)			
1" x 1"	x 1"		30K07-100-100F
1 1/4" x 1 1/4"	x 1"		30K07-125-100F
1 1/2" x 1 1/2"	x 1"		30K07-150-100F



"Y" reducer fitting

(ins x ins)			
A	B	C	
1" x 3/4"	x 3/4"		30K08-100-075-075
1 1/4" x 1"	x 3/4"		30K08-125-100-075
1 1/4" x 1"	x 1"		30K08-125-100-100
1 1/2" x 1"	x 3/4"		30K08-150-100-075
1 1/2" x 1"	x 1"		30K08-150-100-100
1 1/2" x 1 1/4"	x 3/4"		30K08-150-125-075
1 1/2" x 1 1/4"	x 1"		30K08-150-125-100
1 1/2" x 1 1/4"	x 1 1/4"		30K08-150-125-125
2" x 1 1/4"	x 1 1/4"		30K08-200-125-125
2" x 1 1/2"	x 1"		30K08-200-150-100
2" x 1 1/2"	x 1 1/4"		30K08-200-150-125
2" x 1 1/2"	x 1 1/2"		30K08-200-150-150
(ins x mnpt x mnpt)			
1 1/4" x 1"	x 1"		30K08-125-100F-100F
1 1/2" x 1"	x 1"		30K08-150-100F-100F



"T" Fitting

(ins x ins)			
A	B	C	
1" x 1"	x 3/4"		30K05-100-100-075
1" x 1"	x 1"		30K05-100-100-100
1 1/4" x 1 1/4"	x 3/4"		30K05-125-125-075
1 1/4" x 1 1/4"	x 1"		30K05-125-125-100
1 1/2" x 1"	x 1"		30K05-150-100-100
1 1/2" x 1 1/4"	x 1 1/4"		30K05-150-125-125
1 1/2" x 1 1/2"	x 3/4"		30K05-150-150-075
1 1/2" x 1 1/2"	x 1"		30K05-150-150-100
1 1/2" x 1 1/2"	x 1 1/4"		30K05-150-150-125
1 1/2" x 1 1/2"	x 1 1/2"		30K05-150-150-150
2" (ov/size) x 2" (ov/size)	x 1"		30K05-200-200-100
2" (ov/size) x 2" (ov/size)	x 1 1/4"		30K05-200-200-125
2" (ov/size) x 2" (ov/size)	x 1 1/2"		30K05-200-200-150
2" (ov/size) x 2" (ov/size)	x 2" (ov/size)		30K05-200-200-200
3" x 3"	x 3"	(ins x ins)	30K05-300-300-300



316 STAINLESS STEEL FITTINGS



"T" adapter female threaded

(fnpt x fnpt x fnpt)	
1/8"	30002-013
1/4"	30002-025
3/8"	30002-038
1/2"	30002-050
3/4"	30002-075
1"	30002-100
1 1/4"	30002-125
1 1/2"	30002-150
2"	30002-200



Coupling female threaded

(fnpt x fnpt)	
1/4"	30003-025
3/8"	30003-038
1/2"	30003-050
3/4"	30003-075
1"	30003-100
1 1/4"	30003-125
1 1/2"	30003-150
2"	30003-200



Elbow 45° female threaded

(fnpt x fnpt)	
1/2"	30001-050-45
3/4"	30001-075-45
1"	30001-100-45
1 1/4"	30001-125-45
1 1/2"	30001-150-45
2"	30001-200-45



Elbow 90° female threaded

(fnpt)	
1/8"	30001-013-90
1/4"	30001-025-90
3/8"	30001-038-90
1/2"	30001-050-90
3/4"	30001-075-90
1"	30001-100-90
1 1/4"	30001-125-90
1 1/2"	30001-150-90
2"	30001-200-90



Reducer male/female threaded

(mnpt x fnpt)		
A	B	
1/4"	x 1/8"	30005-025-012
3/8"	x 1/4"	30005-038-025
1/2"	x 1/4"	30005-050-025
	x 3/8"	30005-050-038
3/4"	x 1/4"	30005-075-025
	x 3/8"	30005-075-038
	x 1/2"	30005-075-050
1"	x 1/4"	30005-100-025
	x 3/8"	30005-100-038
	x 1/2"	30005-100-050
	x 3/4"	30005-100-075
1 1/4"	x 1/2"	30005-125-050
	x 3/4"	30005-125-075
	x 1"	30005-125-100
1 1/2"	x 1/2"	30005-150-050
	x 3/4"	30005-150-075
	x 1"	30005-150-100
2"	x 1/2"	30005-200-050
	x 3/4"	30005-200-075
	x 1"	30005-200-100
	x 1 1/4"	30005-200-125
	x 1 1/2"	30005-200-150



Plug hexagonal or square head male threaded

(mnpt)	
1/8"	30013-013
1/4"	30013-025
3/8"	30013-038
1/2"	30013-050
3/4"	30013-075
1"	30013-100
1 1/4"	30013-125
1 1/2"	30013-150
2"	30013-200



Street elbow male and female threaded

(fnpt)	
1/8"	30011-013
1/4"	30011-025
3/8"	30011-038
1/2"	30011-050
3/4"	30011-075
1"	30011-100
1 1/4"	30011-125
1 1/2"	30011-150
2"	30011-200



Cap female threaded

(mnpt)	
1/4"	30010-025
3/8"	30010-038
1/2"	30010-050
3/4"	30010-075
1"	30010-100
1 1/4"	30010-125
1 1/2"	30010-150
2"	30010-200



Cross female threaded

(fnpt)	
1/4"	30009-025
3/8"	30009-038
1/2"	30009-050
3/4"	30009-075
1"	30009-100
1 1/4"	30009-125
1 1/2"	30009-150
2"	30009-200

316 STAINLESS STEEL FITTINGS



Nipple schedule 40 male threaded

(mnpt)

Dia.	Length	
1/8"	x 2"	30008-012-200
1/4"	x closed	30008-025-000
	x 1 1/2"	30008-025-150
	x 2"	30008-025-200
	x 2 1/2"	30008-025-250
	x 3"	30008-025-300
	x 3 1/2"	30008-025-350
	x 4"	30008-025-400
	x 4 1/2"	30008-025-450
x 5"	30008-025-500	

3/8"	x closed	30008-038-000
	x 1 1/2"	30008-038-150
	x 2"	30008-038-200
	x 2 1/2"	30008-038-250
	x 3"	30008-038-300
	x 3 1/2"	30008-038-350
	x 4"	30008-038-400
	x 4 1/2"	30008-038-450
x 5"	30008-038-500	

1/2"	x closed	30008-050-000
	x 1 1/2"	30008-050-150
	x 2"	30008-050-200
	x 2 1/2"	30008-050-250
	x 3"	30008-050-300
	x 3 1/2"	30008-050-350
	x 4"	30008-050-400
	x 4 1/2"	30008-050-450
x 5"	30008-050-500	
x 6"	30008-050-600	

3/4"	x closed	30008-075-000
	x 1 1/2"	30008-075-150
	x 2"	30008-075-200
	x 2 1/2"	30008-075-250
	x 3"	30008-075-300
	x 3 1/2"	30008-075-350
	x 4"	30008-075-400
	x 4 1/2"	30008-075-450
	x 5"	30008-075-500
	x 5 1/2"	30008-075-550
x 6"	30008-075-600	

Dia.	Length	
1"	x closed	30008-100-000
	x 2"	30008-100-200
	x 2 1/2"	30008-100-250
	x 3"	30008-100-300
	x 3 1/2"	30008-100-350
	x 4"	30008-100-400
	x 4 1/2"	30008-100-450
	x 5"	30008-100-500
	x 5 1/2"	30008-100-550
	x 6"	30008-100-600

1 1/4"	x closed	30008-125-000
	x 2"	30008-125-200
	x 2 1/2"	30008-125-250
	x 3"	30008-125-300
	x 3 1/2"	30008-125-350
	x 4"	30008-125-400
	x 4 1/2"	30008-125-450
	x 5"	30008-125-500
x 6"	30008-125-600	

1 1/2"	x closed	30008-150-000
	x 2"	30008-150-200
	x 2 1/2"	30008-150-250
	x 3"	30008-150-300
	x 3 1/2"	30008-150-350
	x 4"	30008-150-400
2"	x 4 1/2"	30008-150-450
	x 5"	30008-150-500
	x 6"	30008-150-600

2"	x closed	30008-200-000
	x 2 1/2"	30008-200-250
	x 3"	30008-200-300
	x 3 1/2"	30008-200-350
	x 4"	30008-200-400
	x 4 1/2"	30008-200-450
	x 5"	30008-200-500
	x 5 1/2"	30008-200-550

Union dismantlable female/female threaded

(fnpt)

1/4"	30006-025
3/8"	30006-038
1/2"	30006-050
3/4"	30006-075
1"	30006-100
1 1/4"	30006-125
1 1/2"	30006-150
2"	30006-200



Reducer union female/female threaded

(fnpt x fnpt)

Dia.	Length	
1/4"	x 1/8"	30007-025-012
3/8"	x 1/4"	30007-038-025
1/2"	x 1/4"	30007-050-025
	x 3/8"	30007-050-038
3/4"	x 1/2"	30007-075-050
1"	x 3/8"	30007-100-038
	x 1/2"	30007-100-050
	x 3/4"	30007-100-075
1 1/4"	x 3/4"	30007-125-075
	x 1"	30007-125-100
1 1/2"	x 3/4"	30007-150-075
	x 1"	30007-150-100
	x 1 1/4"	30007-150-125
2"	x 1"	30007-200-100
	x 1 1/4"	30007-200-125
	x 1 1/2"	30007-200-150

GRAY PVC



Adapter female insert

(fnpt x ins)	
1/2"	30I01-050
3/4"	30I01-075
1"	30I01-100
1 1/4"	30I01-125
1 1/2"	30I01-150
2"	30I01-200



Adapter male insert

(mnpt x ins)	
1/2"	30I02-050
3/4"	30I02-075
1"	30I02-100
1 1/4"	30I02-125
1 1/2"	30I02-150
2"	30I02-200
(mnpt x ins) without restriction	
1"	30I02-100-SR
1 1/4"	30I02-125-SR
1 1/2"	30I02-150-SR



Adapter male insert reducer

(mnpt x ins)	
1/2" x 3/4"	30I03-050-075
1/2" x 1"	30I03-050-100
3/4" x 1/2"	30I03-075-050
3/4" x 1"	30I03-075-100
1" x 3/4"	30I03-100-075
1" x 1 1/4"	30I03-100-125
1" x 1 1/2"	30I03-100-150
1 1/4" x 3/4"	30I03-125-075
1 1/4" x 1"	30I03-125-100
1 1/4" x 1 1/2"	30I03-125-150
1 1/2" x 1"	30I03-150-100
1 1/2" x 1 1/4"	30I03-150-125
1 1/2" x 2"	30I03-150-200
2" x 1 1/2"	30I03-200-150



Reducer coupling insert

(ins x ins)	
3/4" x 1/2"	30I07-075-050
1" x 1/2"	30I07-100-050
1" x 3/4"	30I07-100-075
1 1/4" x 3/4"	30I07-125-075
1 1/4" x 1"	30I07-125-100
1 1/2" x 3/4"	30I07-150-075
1 1/2" x 1"	30I07-150-100
1 1/2" x 1 1/4"	30I07-150-125
2" x 1"	30I07-200-100
2" x 1 1/4"	30I07-200-125
2" x 1 1/2"	30I07-200-150



Straight coupling

(ins x ins)	
1/2"	30I07-050
3/4"	30I07-075
1"	30I07-100
1 1/4"	30I07-125
1 1/2"	30I07-150
2"	30I07-200



Flange and Seal

flange 150 lbs ANSI - threaded (fnpt)	
1"	30I13-100
1 1/4"	30I13-125
1 1/2"	30I13-150
2"	30I13-200
2 1/2"	30I13-250
4"	30I13-400
seal epdm for flange	
1"	30I15-100
1 1/4"	30I15-125
1 1/2"	30I15-150
2"	30I15-200
2 1/2"	30I15-250
4"	30I15-400



Elbow 90° insert & reducer

(ins x ins)	
1/2"	30I04-050
3/4"	30I04-075
1"	30I04-100
1 1/4"	30I04-125
1 1/2"	30I04-150
2"	30I04-200
3"	30I04-300
(reducer - ins x ins)	
3/4" x 1/2"	30I04-075-050
1" x 3/4"	30I04-100-075
1 1/4" x 1"	30I04-125-100
1 1/2" x 1 1/4"	30I04-150-125
2" x 1 1/2"	30I04-200-150



Elbow 90° insert female threaded

(ins x fnpt)	
1/2"	30I05-050
3/4"	30I05-075
1"	30I05-100
1 1/4"	30I05-125
1 1/2"	30I05-150
2"	30I05-200
(reducer - ins x fnpt)	
3/4" x 1/2"	30I05-075-050
1" x 1/2"	30I05-100-050
1" x 3/4"	30I05-100-075



Elbow 90° insert male threaded

(ins x mnpt)	
1"	30I06-100
1 1/4"	30I06-125
1 1/2"	30I06-150
2"	30I06-200
(reducer - ins x mnpt)	
1" x 3/4"	30I06-100-075
1/2" x 3/4"	30I06-050
3/4" x 1/2"	30I06-075

GRAY PVC



"T" Adapter insert

(ins x ins)	
1/2"	30I08-050
3/4"	30I08-075
1"	30I08-100
1 1/4"	30I08-125
1 1/2"	30I08-150
2"	30I08-200



"T" Adapter reducer insert

(ins x ins)	
3/4" x 1/2"	30I08-075-050
1" x 1/2"	30I08-100-050
1" x 3/4"	30I08-100-075
1 1/4" x 1/2"	30I08-125-050
1 1/4" x 3/4"	30I08-125-075
1 1/4" x 1"	30I08-125-100
1 1/2" x 1/2"	30I08-150-050
1 1/2" x 3/4"	30I08-150-075
1 1/2" x 1"	30I08-150-100
1 1/2" x 1 1/4"	30I08-150-125
2" x 1/2"	30I08-200-050
2" x 3/4"	30I08-200-075
2" x 1"	30I08-200-100
2" x 1 1/4"	30I08-200-125
2" x 1 1/2"	30I08-200-150



Pipe nipple male threaded

(mnpt x mnpt)	
1/4" x closed	30I12-025-000
1/4" x 1 1/2"	30I12-025-150
1/4" x 2"	30I12-025-200
1/4" x 3"	30I12-025-300
1/2" x closed	30I12-050-000
1/2" x 2"	30I12-050-200
1/2" x 3"	30I12-050-300
1/2" x 4"	30I12-050-400
1/2" x 5"	30I12-050-500
3/4" x closed	30I12-075-000
3/4" x 2"	30I12-075-200
3/4" x 3"	30I12-075-300
3/4" x 4"	30I12-075-400
3/4" x 5"	30I12-075-500
3/4" x 6"	30I12-075-600
1" x closed	30I12-100-000
1" x 2"	30I12-100-200
1" x 3"	30I12-100-300
1" x 4"	30I12-100-400
1" x 5"	30I12-100-500
1" x 6"	30I12-100-600
1 1/4" x closed	30I12-125-000
1 1/4" x 2"	30I12-125-200
1 1/4" x 3"	30I12-125-300
1 1/4" x 4"	30I12-125-400
1 1/4" x 5"	30I12-125-500
1 1/4" x 6"	30I12-125-600
1 1/2" x closed	30I12-150-000
1 1/2" x 2"	30I12-150-200
1 1/2" x 3"	30I12-150-300
1 1/2" x 4"	30I12-150-400
1 1/2" x 5"	30I12-150-500
1 1/2" x 6"	30I12-150-600
2" x closed	30I12-200-000
2" x 3"	30I12-200-300
2" x 4"	30I12-200-400
2" x 5"	30I12-200-500
2" x 6"	30I12-200-600



"T" Adapter insert male threaded

(ins x ins x mnpt)	
3/4"	30I10-075
1"	30I10-100
1 1/4"	30I10-125
1 1/2"	30I10-150
2"	30I10-200



"T" Adapter insert female threaded

(ins x ins x fnpt)	
1/2"	30I09-050
3/4"	30I09-075
1"	30I09-100
1 1/4"	30I09-125
1 1/2"	30I09-150
2"	30I09-200



"T" adapter reducer insert female threaded

(ins x ins x fnpt)	
3/4" x 1/2"	30I09-075-050
1" x 1/2"	30I09-100-050
1" x 3/4"	30I09-100-075
1 1/4" x 1/2"	30I09-125-050
1 1/4" x 3/4"	30I09-125-075
1 1/4" x 1"	30I09-125-100
1 1/2" x 1/2"	30I09-150-050
1 1/2" x 3/4"	30I09-150-075
1 1/2" x 1"	30I09-150-100
1 1/2" x 1 1/4"	30I09-150-125
2" x 1/2"	30I09-200-050
2" x 3/4"	30I09-200-075
2" x 1"	30I09-200-100
2" x 1 1/2"	30I09-200-150



"T" Adapter reducer insert male threaded

(ins x ins x mnpt)	
1" x 1/2"	30I10-100-050
1" x 3/4"	30I10-100-075



Plug insert

(ins)	
1/2"	30I11-050
3/4"	30I11-075
1"	30I11-100
1 1/4"	30I11-125
1 1/2"	30I11-150
2"	30I11-200

WHITE PVC - SCHEDULE 40



"T" Adapter white

(soc x soc)	
1"	30J01-100
1 1/4"	30J01-125
1 1/2"	30J01-150
2"	30J01-200
3"	30J01-300
(soc x soc x fnpt)	
1 1/2"	30J02-150
2"	30J02-200
1 1/4" x 1/2"	30J03-125-050
1 1/2" x 1/2"	30J03-150-050
1 1/2" x 3/4"	30J03-150-075
1 1/2" x 1 1/4"	30J03-150-125
2" x 1/2"	30J03-200-050
2" x 3/4"	30J03-200-075
2" x 1"	30J03-200-100
2" x 1 1/4"	30J03-200-125
2" x 1 1/2"	30J03-200-150
(fnpt x fnpt)	
1/2"	30J04-050
3/4"	30J04-075
1"	30J04-100
1 1/4"	30J04-125
1 1/2"	30J04-150
2"	30J04-200
Reducer threader (soc x soc x soc)	
1" x 1" x 1/2"	30J50-100-050
1 1/4" x 1 1/4" x 3/4"	30J50-125-075
2" x 2" x 1 1/2"	30J50-200-150



"Y" Adapter soc

(soc x soc)	
1"	30J39-100
1 1/4"	30J39-125
1 1/2"	30J39-150
2"	30J39-200
3"	30J39-300

Pipe scedule 40

10' Long	White	Clear
1"	30N01-100	30N02-100
1 1/4"	30N01-125	30N02-125
1 1/2"	30N01-150	30N02-150
2"	30N01-200	30N02-200
3"	30N01-300	-----



Elbow 90°

(soc x soc)	
1"	30J05-100
1 1/4"	30J05-125
1 1/2"	30J05-150
2"	30J05-200
3"	30J05-300
(soc x fnpt)	
1 1/2"	30J07-150
2"	30J07-200
3"	30J07-300
Reducer-1 1/2" x 1"	
30J08-150-100	
Reducer-1 1/2" x 1 1/4"	
30J08-150-125	
Reducer-2" x 1 1/4"	
30J08-200-125	
Reducer-2" x 1 1/2"	
30J08-200-150	
(fnpt x fnpt)	
1/2"	30J09-050
3/4"	30J09-075
1"	30J09-100
1 1/4"	30J09-125
1 1/2"	30J09-150
2"	30J09-200
(spig x soc)	
1 1/2"	30J10-150
2"	30J10-200
3"	30J10-300
(soc x mnpt)	
3/4"	30J11-075
1"	30J11-100
1 1/4"	30J11-125
1 1/2"	30J11-150
2"	30J11-200
(spig x fnpt)	
1 1/2"	30J12-150
(mnpt x fnpt)	
1/2"	30J14-050
3/4"	30J14-075
1"	30J14-100
1 1/4"	30J14-125
1 1/2"	30J14-150
2"	30J14-200



Cross soc

(soc x soc)	
3/4"	30J19-075
1 1/4"	30J19-125
1 1/2"	30J19-150
2"	30J19-200
3"	30J19-300



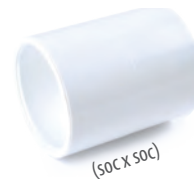
Union soc dismountable buna-n O'ring

(soc x soc)	
1/2"	30J34-050
3/4"	30J34-075
1"	30J34-100
1 1/4"	30J34-125
1 1/2"	30J34-150
2"	30J34-200
3"	30J34-300



Union threaded dismountable

(fnpt x fnpt)	
1"	30J35-100
1 1/4"	30J35-125
1 1/2"	30J35-150
2"	30J35-200
3"	30J35-300



Coupling

(soc x soc)	
1/2"	30J21-050
3/4"	30J21-075
1"	30J21-100
1 1/4"	30J21-125
1 1/2"	30J21-150
2"	30J21-200
3"	30J21-300
Reducer soc (soc x soc)	
1 1/2" x 1 1/4"	30J22-150-125
2" x 1/2"	30J22-200-050
2" x 1"	30J22-200-100
2" x 1 1/4"	30J22-200-125
2" x 1 1/2"	30J22-200-150
3" x 2"	30J22-300-200
4" x 3"	30J22-400-300
Reducer threaded (fnpt x fnpt)	
1/2" x 3/8"	30J48-050-038
3/4" x 1/2"	30J48-075-050

WHITE PVC - SCHEDULE 40



Elbow 22 1/2° street soc

(spig x soc)

1 1/2"	30J28-150
2"	30J28-200



"T" Adapter street soc

(spig x soc x soc)

1 1/2"	30J29-150
2"	30J29-200



Cap soc

(soc x soc)

1/2"	30J30-050
1"	30J30-100
1 1/4"	30J30-125
1 1/2"	30J30-150
2"	30J30-200
3"	30J30-300



Elbow 45° street soc

(spig x soc)

1 1/2"	30J20-150
2"	30J20-200



Adapter threaded male

(mnpt x soc)

3/4"	30J23-075
1"	30J23-100
1 1/4"	30J23-125
1 1/2"	30J23-150
2"	30J23-200
2 1/2"	30J23-250
3"	30J23-300



Reducer threaded male/female

(mnpt x fnpt)

3/8" x 1/4"	30J27-038-025
1/2" x 1/4"	30J27-050-025
1/2" x 3/8"	30J27-050-038
3/4" x 1/4"	30J27-075-025
3/4" x 3/8"	30J27-075-038
3/4" x 1/2"	30J27-075-050
1" x 1/4"	30J27-100-025
1" x 1/2"	30J27-100-050
1" x 3/4"	30J27-100-075
1 1/4" x 1/2"	30J27-125-050
1 1/4" x 3/4"	30J27-125-075
1 1/4" x 1"	30J27-125-100
1 1/2" x 1/2"	30J27-150-050
1 1/2" x 3/4"	30J27-150-075
1 1/2" x 1"	30J27-150-100
1 1/2" x 1 1/4"	30J27-150-125
2" x 3/4"	30J27-200-075
2" x 1"	30J27-200-100
2" x 1 1/4"	30J27-200-125
2" x 1 1/2"	30J27-200-150
3" x 2"	30J27-300-200



Elbow 45° soc

(soc x soc)

1/2"	30J17-050
3/4"	30J17-075
1"	30J17-100
1 1/4"	30J17-125
1 1/2"	30J17-150
2"	30J17-200
3"	30J17-300



Plug threaded

(mnpt)

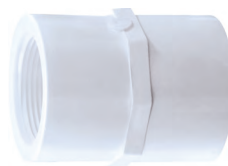
1/4"	30J33-025
3/8"	30J33-038
1/2"	30J33-050
3/4"	30J33-075
1"	30J33-100
1 1/4"	30J33-125
1 1/2"	30J33-150
2"	30J33-200
3"	30J33-300



Elbow 11 1/4° soc

(soc x soc)

2"	30J13-200
----	-----------



Threaded coupling

(fnpt x fnpt)

1/2"	30J46-050
1"	30J46-100
1 1/4"	30J46-125
1 1/2"	30J46-150
2"	30J46-200



Adapter reducer threaded male

(mnpt x soc)

1/2" x 1"	30J24-050-100
1 1/4" x 1 1/2"	30J24-125-150
1 1/2" x 1 1/4"	30J24-150-125
1 1/2" x 2"	30J24-150-200
2" x 1 1/2"	30J24-200-150
2 1/2" x 3"	30J24-250-300

Elbow 22 1/2° soc

(soc x soc)

1 1/2"	30J16-150
2"	30J16-200
3"	30J16-300

WHITE PVC - SCHEDULE 40



Adapter insert soc

(ins x soc)	
1 1/2"	30J38-150
2"	30J38-200



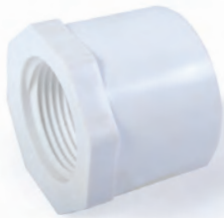
Adapter insert street

(ins x spig)	
1"	30J36-100
1 1/4"	30J36-125
1 1/2"	30J36-150
2"	30J36-200



Adapter spig female threaded

(spig x fnpt)	
1/2"	30J41-050
1"	30J41-100
1 1/4"	30J41-125
1 1/2"	30J41-150
2"	30J41-200
3"	30J41-300



Bushing reducer flush style

(spig x soc)	
1 1/2" x 3/4"	30J25-150-075
1 1/2" x 1"	30J25-150-100
1 1/2" x 1 1/4"	30J25-150-125
2" x 3/4"	30J25-200-075
2" x 1"	30J25-200-100
2" x 1 1/2"	30J25-200-150
2 1/2" x 2"	30J25-250-200
3" x 1 1/4"	30J25-300-125
3" x 1 1/2"	30J25-300-150
3" x 2"	30J25-300-200
3" x 2 1/2"	30J25-300-250

(spig x fnpt)	
3/4" x 1/4"	30J26-075-025
1" x 1/2"	30J26-100-050
1" x 3/4"	30J26-100-075
1 1/4" x 3/4"	30J26-125-075
1 1/4" x 1"	30J26-125-100
1 1/2" x 1/4"	30J26-150-025
1 1/2" x 1/2"	30J26-150-050
1 1/2" x 3/4"	30J26-150-075
1 1/2" x 1"	30J26-150-100
1 1/2" x 1 1/4"	30J26-150-125
2" x 1/4"	30J26-200-025
2" x 1/2"	30J26-200-050
2" x 3/4"	30J26-200-075
2" x 1"	30J26-200-100
2" x 1 1/4"	30J26-200-125
2" x 1 1/2"	30J26-200-150
3" x 1 1/4"	30J26-300-125
3" x 2 1/2"	30J26-300-250



Cap threaded

(fnpt)	
1/2"	30J31-050
3/4"	30J31-075
1"	30J31-100
1 1/4"	30J31-125
1 1/2"	30J31-150
2"	30J31-200



Adapter male threaded spigot

(mnpt x spig)	
1/2"	30J37-050
1"	30J37-100
1 1/2"	30J37-150
2"	30J37-200



Female adapter

(soc x fnpt)	
1" x 1"	30J47-100
1 1/4" x 1 1/4"	30J47-125
1 1/2" x 1 1/2"	30J47-150
2" x 2"	30J47-200
3" x 3"	30J47-300



PVC Pipe Strap

1/2"	30J45-050
3/4"	30J45-075
1"	30J45-100
1 1/4"	30J45-125
1 1/2"	30J45-150
2"	30J45-200
3"	30J45-300



Plug spigot

(spig)	
1 1/4"	30J32-125
1 1/2"	30J32-150
2"	30J32-200
2 1/2"	30J32-250



Teflon

Tape		
1/2" X 520"	White	30J99-050-520WH
1/2" X 260"	Gray	30J99-050-260GY
1/2" X 260"	Pink	30J99-050-260PK
Compound		
118 ml		30J99-TP118
473 ml		30J99-TP473

Glue & Primer

Glue for PVC		
118 ml	Clear	30J99-GC118
236 ml	Clear	30J99-GC236
236 ml	Clear, HD	30J99-GCHD236
946 ml	Clear, HD	30J99-GCHD946
946 ml	Gray, HD	30J99-GGHD946
Glue for ABS		
118 ml	Yellow	30J99-GY118
PVC Primer		
118 ml		30J99-PC118



CAMLOCK ADAPTERS

- POLYPROPYLENE -



Part A

3/4"	30H01-075
1"	30H01-100
1 1/4"	30H01-125
1 1/2"	30H01-150
2"	30H01-200



Part B

3/4"	30H02-075
1"	30H02-100
1 1/4"	30H02-125
1 1/2"	30H02-150
2"	30H02-200



Part C

3/4"	30H03-075
1"	30H03-100
1 1/4"	30H03-125
1 1/2"	30H03-150
2"	30H03-200



Part D

3/4"	30H04-075
1"	30H04-100
1 1/4"	30H04-125
1 1/2"	30H04-150
2"	30H04-200



Part E

3/4"	30H05-075
1"	30H05-100
1 1/4"	30H05-125
1 1/2"	30H05-150
2"	30H05-200



Part F

3/4"	30H06-075
1"	30H06-100
1 1/4"	30H06-125
1 1/2"	30H06-150
2"	30H06-200



Part DP

3/4"	30H07-075
1"	30H07-100
1 1/4"	30H07-125
1 1/2"	30H07-150
2"	30H07-200



Part DC

3/4"	30H08-075
1"	30H08-100
1 1/4"	30H08-125
1 1/2"	30H08-150
2"	30H08-200

- STAINLESS STEEL -



Part A

3/4"	30H09-075
1"	30H09-100
1 1/4"	30H09-125
1 1/2"	30H09-150
2"	30H09-200



Part B

3/4"	30H10-075
1"	30H10-100
1 1/4"	30H10-125
1 1/2"	30H10-150
2"	30H10-200



Part C

3/4"	30H11-075
1"	30H11-100
1 1/4"	30H11-125
1 1/2"	30H11-150
2"	30H11-200



Part D

3/4"	30H12-075
1"	30H12-100
1 1/4"	30H12-125
1 1/2"	30H12-150
2"	30H12-200



Part E

3/4"	30H13-075
1"	30H13-100
1 1/4"	30H13-125
1 1/2"	30H13-150
2"	30H13-200



Part F

3/4"	30H14-075
1"	30H14-100
1 1/4"	30H14-125
1 1/2"	30H14-150
2"	30H14-200



Part DP

3/4"	30H15-075
1"	30H15-100
1 1/4"	30H15-125
1 1/2"	30H15-150
2"	30H15-200



Part DC

3/4"	30H16-075
1"	30H16-100
1 1/4"	30H16-125
1 1/2"	30H16-150
2"	30H16-200

QUICK CLAMP FITTINGS - STAINLESS STEEL



Insert Clamp Fitting

3/4"	Clamp 1 1/2"	30R01-075-150
1"	Clamp 1 1/2"	30R01-100-150
1 1/4"	Clamp 1 1/2"	30R01-125-150
1 1/4"	Clamp 2"	30R01-125-200
1 1/2"	Clamp 1 1/2"	30R01-150-150
2"	Clamp 2"	30R01-200-200



Insert Fitting

3/4"	Clamp 1 1/2"	30R02-075-150
1"	Clamp 1 1/2"	30R02-100-150
1 1/4"	Clamp 1 1/2"	30R02-125-150
1 1/2"	Clamp 1 1/2"	30R02-150-150
1 1/2"	Clamp 2"	30R02-150-200
2"	Clamp 2"	30R02-200-200
2"	Clamp 2 1/2"	30R02-200-250
3"	Clamp 3"	30R02-300-300



Female Threaded Fitting

3/4"	Clamp 1 1/2"	30R03-075-150
1"	Clamp 1 1/2"	30R03-100-150
1 1/4"	Clamp 2"	30R03-125-200
1 1/2"	Clamp 2 1/2"	30R03-150-250
2"	Clamp 2 1/2"	30R03-200-250



Male Threaded Fitting

3/4"	Clamp 1 1/2"	30R04-075-150
1"	Clamp 1 1/2"	30R04-100-150
1 1/4"	Clamp 1 1/2"	30R04-125-150
1 1/4"	Clamp 2"	30R04-125-200
1 1/2"	Clamp 2"	30R04-150-200
1 1/2"	Clamp 2 1/2"	30R04-150-250
2"	Clamp 2 1/2"	30R04-200-250



Clamp HD

Clamp 1 1/2"	30R05-150
Clamp 2"	30R05-200
Clamp 2 1/2"	30R05-250
Clamp 3"	30R05-300



Gasket

Clamp 1 1/2"	30R06-150
Clamp 2"	30R06-200
Clamp 2 1/2"	30R06-250
Clamp 3"	30R06-300



Cap

Clamp 1 1/2"	30R07-150
Clamp 2"	30R07-200
Clamp 2 1/2"	30R07-250

CONNECTING SYSTEM



Flexible Vacuum Hose Food Grade

11A01-100	1"
11A01-125	1 1/4"
11A01-150	1 1/2"
11A01-200	2"
11A01-300	3"



Braided PVC Clear Hose

11B01-075	3/4"	150 PSI
11B01-100	1"	125 PSI
11B01-125	1 1/4"	100 PSI
11B01-150	1 1/2"	100 PSI
11B01-200	2"	75 PSI



Check Valve PVC

(fmp t x fnpt)		
30G11-100	1"	Clear
30G11-125	1 1/4"	Clear
30G13-125	1 1/4"	White
30G11-150	1 1/2"	Clear
30G11-200	2"	Clear
(soc x soc)		
30G10-100	1"	
30G10-150	1 1/2"	Clear
30G14-150	1 1/2" - Offset	Clear
30G10-200	2"	Clear
30G10-300	3"	Clear



Vinyl Clear Hose

11C01-075	3/4" X 1/8" THICK	35 PSI
11C01-100	1" X 1/8" THICK	25 PSI
11C01-125	1 1/4" X 1/8" THICK	20 PSI
11C02-075	3/4" X 1/4" THICK	40 PSI
11C02-100	1" X 1/4" THICK	35 PSI
11C02-125	1 1/4" X 1/4" THICK	40 PSI
11C02-150	1 1/2" X 1/4" THICK	35 PSI



Rubber Coupling

30T01-125	with collars	1 1/4"
30T01-150	with collars	1 1/2"
30T01-200	with collars	2"
30T01-300	with collars	3"
30T02-150-125	reducer with collars	1 1/2" x 1 1/4"
30T02-200-150	reducer with collars	2" x 1 1/2"
30T02-300-150	reducer with collars	3" x 1 1/2"
30T02-300-200	reducer with collars	3" x 2"

Check Valve Stainless

30G09-050	1/2"
30G09-075	3/4"
30G09-100	1"
30G09-125	1 1/4"
30G09-150	1 1/2"

PUMPS

Rotary Vane Vacuum Pump

VAKUÖ 29



25J06-040

- High performance
- Reliability
- Quiet
- Compact
- Low maintenance
- Competitive price

Engine force	CFM @ 0" Hg	CFM @ -15" Hg	Taps	Assembled with motor:	
				3 stages 600 V	3 stages 230 / 460 V
1 HP	17	7	1 100	-----	25J06-025
2 HP	28	14	2 400	25J08-040	25J06-040
3 HP	45	20	3 800	25J08-063	25J06-063
4 HP	71	28	6 000	25J08-100	25J06-100
5 HP	98	38	8 300	25J08-140	25J06-140
7.5 HP	112	53	9 500	25J08-160	25J06-160
7.5 HP	141	58	12 000	25J08-202	25J06-202
10 HP	177	85	15 000	25J08-250	25J06-250
10 HP	212	92	18 000	25J08-302	25J06-302

15 month* Limited Warranty against defects in materials and workmanship, see details at Warranty section www.dsdstars.com



Thermostat programmable

50F01-001 With temperature probe

Drive

230V - 1 stage input

	For motor	
50C01-0200	1.5HP and 2HP	3 stages
50C01-0300	3HP	3 stages
50C01-0400	4HP	3 stages
50C01-0500	5HP	3 stages
50C01-0750	7.5HP	3 stages
50C01-1000	10HP	3 stages
50C01-1500	15HP	3 stages
50C01-2000	20HP	3 stages
50C01-4000	40HP	3 stages

230V - 3 stages input

	For motor	
50C06-2000	20HP	3 stages
50C06-4000	30HP	3 stages

600V - 3 stages input

	For motor	
50C05-0100	1HP	3 stages
50C05-0200	1.5HP and 2HP	3 stages
50C05-0300	3HP	3 stages
50C05-0500	5HP	3 stages
50C05-0750	7.5HP	3 stages
50C05-1000	10HP	3 stages
50C05-1500	15HP	3 stages
50C05-2000	20HP	3 stages
50C05-4000	40HP	3 stages



Aluminum centralized station for vacuum system

Table only	W	L	H1	H2
25J13-20-28	20"	28"	21"	33"
25J13-24-40	24"	40"	20"	37.5"

For Pump # VAKUÖ 29

Factory assembled		
25J14-025-063	# 025 @ # 063	20" x 28"
25J14-100-140	# 100 @ # 140	24" x 40"
25J14-160-302	# 160 @ # 302	24" x 40"

Pump, Transfer tank, White pvc, Check valve, Temperature automatic Starter, Drive, Potentiometer, Vapor trap Sold separately.

Potentiometer

50G01-VS1



PUMPS

Electric Diaphragm Pump SS 304



GPM	PSI	Engine force
15.5	42.7	2 HP
20	42.7	2 HP

Assembled with motor:

3 stages
230 / 460 V

25005-155
25005-200

Use this model of electric diaphragm pump in combination with a drive.
By reducing the electric motor RPM, the liquid has more time to circulate.

Air Diaphragm Pump



GPM	PSI	Cube Feet	SS	Aluminum
10.5	99	60 cu ft	25001-105	25002-105
35	99	60 cu ft	25001-350	25002-350

Gear Pump GUEËRR



Stainless steel
316

Input	Output	GPM IMP	GPM US	Temp	Max Press	Stainless Steel 316
3/8"	3/8"	2.64	3.17	120°C	142 lbs	25Q01-0026-038
1/2"	1/2"	5.50	6.60	120°C	142 lbs	25Q01-0055-050
3/4"	3/4"	7.26	8.72	120°C	142 lbs	25Q01-0072-075
1"	1"	11.00	13.21	120°C	142 lbs	25Q01-0110-100
1 1/2"	1 1/2"	27.50	33.02	120°C	142 lbs	25Q01-0275-150
2"	2"	49.50	59.44	120°C	142 lbs	25Q01-0495-200
2 1/2"	2 1/2"	66.00	79.25	120°C	142 lbs	25Q01-0660-250

Electric diaphragm pump SS 304

Assembled pump - with support



GPM	PSI	Electric power	
6	60	1.6 Amp. / 115 Volt	25004-060S

PUMP PARTS

Parts - VAKUÖ29 model



Exhaust Valve

VAKUÖ 29

# 040 @ # 140	25J84-040-140
# 160 @ # 302	25J84-160-302

Vane Kit for Vacuum Pump

For pump

VAKUÖ29 # 025	25J83-025
VAKUÖ29 # 040	25J83-040
VAKUÖ29 # 063	25J83-063
VAKUÖ29 # 100	25J83-100
VAKUÖ29 # 140	25J83-140
VAKUÖ29 # 160 @ # 202	25J83-160-202
VAKUÖ29 # 250 @ # 302	25J83-250-302

Bearing

For pump

VAKUÖ29 # 025 @ # 040	25J89-025-040
VAKUÖ29 # 063 @ # 140	25J89-063-140
VAKUÖ29 # 160 @ # 302	25J89-160-302

Gasket Kit

For pump

VAKUÖ29 # 025	25J85-025
VAKUÖ29 # 040	25J85-040
VAKUÖ29 # 063 @ # 100	25J85-063-100
VAKUÖ29 # 140	25J85-140
VAKUÖ29 # 160 @ # 202	25J85-160-202
VAKUÖ29 # 250 @ # 302	25J85-250-302



Coupling Sleeve

For pump

VAKUÖ29 # 040	25J80-040
VAKUÖ29 # 063 @ # 100	25J80-063-100
VAKUÖ29 # 160 @ # 302	25J80-160-302

Exhaust Filter

For pump

VAKUÖ29 # 025	25J88-025
VAKUÖ29 # 040 @ # 100	25J88-040-100
VAKUÖ29 # 140	25J88-140
VAKUÖ29 # 160 @ # 302	25J88-160-302

Exhaust Filter

For pump

VAKUÖ29 # 040 @ # 100	25J87-040-100
VAKUÖ29 # 140 @ # 302	25J87-140-302

Intake Filter - assembly

Filter size For Entry For Pump # VAKUÖ 29

NO. 1	1/2" NPTM	-----	25J82-1-050
NO. 2	1 1/4" NPTM	# 040 @ # 100	25J82-2-125
NO. 3	1 1/4" NPTM	# 040 @ # 140	25J82-3-125
NO. 4	2" NPTM	# 160 @ # 302	25J82-4-200

Intake Filter

Filter size

NO. 2	25J81-2
NO. 3	25J81-3
NO. 4	25J81-4

WATER PUMPS FOR DISCHARGE

Stainless Steel

- Input & Output :
1" to 4" pipe

- Up to 732' (223 m)
(Head Height)

- Water Temperature:
up to 120°C (248°F)

- Pressure:
up to 320 PSI



GPM	Pressure PSI	Head Height	In / Out Pipe Diameter	Engine force	Assembled with motor :			Kit Flanges 150lbs ANSI
					1 stage	3 stages 600 V	3 stages 230V/460V	
4.4	46	108.3'	25 mm / 1"	0.75 HP	25N03-0044-046	25N04-0044-046	25N02-0044-046	+ 1" threaded 30117-100
4.4	120	272.3'	25 mm / 1"	1.5 HP	25N03-0044-120	25N04-0044-120	25N02-0044-120	
8.8	48	108.3'	25 mm / 1"	1 HP	25N03-0088-048	25N04-0088-048	25N02-0088-048	
8.8	83	187'	25 mm / 1"	1.5 HP	25N03-0088-083	25N04-0088-083	25N02-0088-083	
8.8	100	226.4'	25 mm / 1"	1.5 HP	25N03-0088-100	25N04-0088-100	25N02-0088-100	
8.8	186	419.9'	25 mm / 1"	3 HP	25N03-0088-186	25N04-0088-186	25N02-0088-186	
13.2	44	98.4'	25 mm / 1"	0.75 HP	25N03-0132-044	25N04-0132-044	25N02-0132-044	+ 1 1/4" threaded 30117-125
13.2	142	321.5'	25 mm / 1"	3 HP	25N03-0132-142	25N04-0132-142	25N02-0132-142	
17.6	33	75.5'	32 mm / 1 1/4"	1 HP	25N03-0176-033	25N04-0176-033	25N02-0176-033	
17.6	87	196.8'	32 mm / 1 1/4"	3 HP	25N03-0176-087	25N04-0176-087	25N02-0176-087	
17.6	138	311.7'	32 mm / 1 1/4"	5 HP	25N03-0176-138	25N04-0176-138	25N02-0176-138	
17.6	210	475.7'	32 mm / 1 1/4"	5 HP	25N03-0176-210	25N04-0176-210	25N02-0176-210	
17.6	244	557'	32 mm / 1 1/4"	7.5 HP	25N03-0176-244	25N04-0176-244	25N02-0176-244	+ 1 1/2" threaded 30117-150
35.2	38	85.3'	40 mm / 1 1/2"	2 HP	25N03-0352-038	25N04-0352-038	25N02-0352-038	
35.2	58	131.2'	40 mm / 1 1/2"	3 HP	25N03-0352-058	25N04-0352-058	25N02-0352-058	
35.2	78	177.2'	40 mm / 1 1/2"	5 HP	25N03-0352-078	25N04-0352-078	25N02-0352-078	
35.2	119	269'	40 mm / 1 1/2"	5 HP	25N03-0352-119	25N04-0352-119	25N02-0352-119	
35.2	277	639.8'	40 mm / 1 1/2"	15 HP	-----	25N04-0352-277	25N02-0352-277	
52.8	46	105'	50 mm / 2"	3 HP	25N03-0528-046	25N04-0528-046	25N02-0528-046	+ 2" threaded 30117-200
52.8	70	157.5'	50 mm / 2"	5 HP	25N03-0528-070	25N04-0528-070	25N02-0528-070	
52.8	93	210'	50 mm / 2"	7.5 HP	25N03-0528-093	25N04-0528-093	25N02-0528-093	
52.8	162	367.4'	50 mm / 2"	10 HP	25N03-0528-162	25N04-0528-162	25N02-0528-162	
52.8	274	633'	50 mm / 2"	20 HP	-----	25N04-0528-274	25N02-0528-274	
52.8	320	732.8'	50 mm / 2"	20 HP	-----	25N04-0528-320	25N02-0528-320	
70.4	51	114.8'	50 mm / 2"	5 HP	25N03-0704-051	25N04-0704-051	25N02-0704-051	
70.4	78	177.2'	50 mm / 2"	7.5 HP	25N03-0704-078	25N04-0704-078	25N02-0704-078	
70.4	104	236.2'	50 mm / 2"	10 HP	25N03-0704-104	25N04-0704-104	25N02-0704-104	
88	75	114.8'	50 mm / 2"	7.5 HP	25N03-0880-075	25N04-0880-075	25N02-0880-075	
88	128	295.3'	50 mm / 2"	15 HP	-----	25N04-0880-128	25N02-0880-128	
88	153	354.3'	50 mm / 2"	15 HP	-----	25N04-0880-153	25N02-0880-153	
88	207	479.0'	50 mm / 2"	20 HP	-----	25N04-0880-207	25N02-0880-207	
141	66	147.6'	65 mm / 2 1/2"	10 HP	25N03-1410-066	25N04-1410-066	25N02-1410-066	+ 2 1/2" threaded 30117-250
185	74	170.6'	80 mm / 3"	20 HP	-----	25N04-1850-074	25N02-1850-074	+ 3" threaded 30117-300
185	207	479.0'	80 mm / 3"	40 HP	-----	25N04-1850-207	25N02-1850-207	
286	47	105'	100 mm / 4"	15 HP	-----	25N04-2860-047	25N02-2860-047	+ 4" threaded 30117-400

Other models available on order

Flange kit includes:
2 flanges, 2 seals, SS hardware



Filter strainer "T" line

1"	65Z01-398505
1 1/2"	65Z01-39957



GAUGES, OIL, SILICONE



30Q11-400



30Q01



30Q13-250



30Q03-250



Food Grade Grease

6 g	98C01-003
400 g	98C01-001



Food Grade Silicone clear in tube - Dow Corning

300 ml	98B01-300
--------	-----------



Red Silicone high temperature

300 ml	98B02-300
--------	-----------

Vacuum Gauge

30" HG to 0 VAC/KPA

1 1/2"	1/8" MNPT outlet at the bottom	30Q01-150
2"	1/4" MNPT outlet at the bottom	30Q01-200
2 1/2"	1/4" MNPT outlet at the bottom	30Q01-250
4"	1/4" MNPT outlet at the bottom	30Q01-400
1 1/2"	Vacuum Gauge Kit for 3/16" tubing	30Q02-150-188
2 1/2"	Glycerin - 1/4" MNPT outlet at the bottom	30Q03-250
2"	SS - 1/4" MNPT outlet at the bottom	30Q11-200
2 1/2"	SS - 1/4" MNPT outlet at the bottom	30Q11-250
4"	SS - 1/4" MNPT outlet at the bottom	30Q11-400
2 1/2"	SS Glycerin - 1/4" MNPT outlet bottom	30Q13-250



30Q02-150-188

Product may differ from the picture.



30Q21-250-1000



30Q21-250-0200

Pressure Gauge

2 1/2"	SS - 1/4" MNPT outlet at the bottom - 200PSI	30Q18-250-0200
2 1/2"	SS - 1/4" MNPT outlet back - 200PSI	30Q21-250-0200
2 1/2"	SS - 1/4" MNPT outlet back - 1000PSI	30Q21-250-1000
1 1/2"	Steel - 1/8" MNPT outlet back - 1BAR	30Q22-150-001

Oil

designed for Vacuum Pumps

Oil type	Size	
IRVING - ISO 46	4 L	98A02-046-4L
IRVING - ISO 68	4 L	98A02-068-4L
IRVING - ISO 100	4 L	98A02-100-4L
IRVING - ISO 46	19 L	98A02-046-19L
IRVING - ISO 68	19 L	98A02-068-19L
IRVING - ISO 100	19 L	98A02-100-19L



COLLARS

High Performance Stainless steel collar grade 304

For tubing:		Width / Thickness
3/4"	30L02-075	9/16" x 0.028"
1"	30L02-100	9/16" x 0.028"
1 1/4"	30L02-125	9/16" x 0.028"
1 1/2"	30L02-150	9/16" x 0.028"
2"	30L02-200	5/8" x 0.031"
3"	30L02-300	5/8" x 0.031"



Stainless steel Industrial collar

For tubing:			
1"	HDPE	30L07-100	Single Hex Bolt
1"	LDPE	30L05-100	Single Hex Bolt
1 1/4"	HDPE - LDPE	30L06-125	Double Hex Bolt
1 1/2"	HDPE - LDPE	30L06-150	Double Hex Bolt
2"	HDPE - LDPE	30L06-200	Double Hex Bolt
3"	HDPE - LDPE	30L06-300	Double Hex Bolt



VALVES



Single union ball valve PVC

Threaded	
1"	30G22-100
1 1/2"	30G22-150
2"	30G22-200
Soc	
1"	30G23-100
1 1/2"	30G23-150
2"	30G23-200



Ball Valve SS

(fnpt x fnpt)	
1/4"	30G05-025
1/2"	30G05-050
3/4"	30G05-075
Soc	
1"	30G05-100
1 1/4"	30G05-125
1 1/2"	30G05-150
2"	30G05-200



Seal for Butterfly valve

Silicone	
1 1/2"	30G08-150S-SK
2"	30G08-200S-SK
Viton	
1 1/2"	30G08-150-SK
2"	30G08-200-SK



Butterfly Valve SS with pull handle

with silicone seal	
1 1/2"	30G08-150S
2"	30G08-200S
with viton seal	
1 1/2"	30G08-150
2"	30G08-200



Guillotine Valve PVC

1"	30G06-100
1 1/2"	30G06-150
2"	30G06-200
3"	30G06-300



3 way ball valve female threaded stainless steel

(fnpt x fnpt x fnpt)	
1"	30G20-100



Ball Valve

(threaded)	
1/2"	30G01-050
3/4"	30G01-075
1"	30G01-100
1 1/4"	30G01-125
1 1/2"	30G01-150
2"	30G01-200
3"	30G01-300
(soc)	
1/2"	30G02-050
3/4"	30G02-075
1"	30G02-100
1 1/4"	30G02-125
1 1/2"	30G02-150
2"	30G02-200
3"	30G02-300

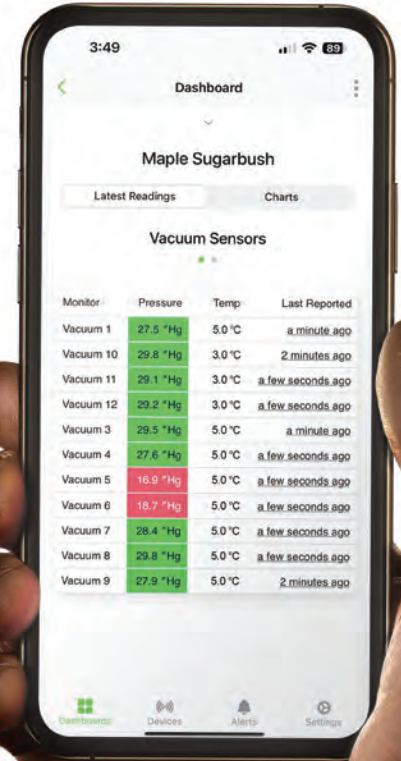
SUGAR BUSH MANAGEMENT SYSTEM



Farmblox
over 12,000 acres monitored

Walk less, Sleep better

Monitor what is most critical in your sugar bush from your smartphone and/or computer no matter your geographic area



BENEFITS

Reliable

- **5+ years of battery life!** Monitor with solar panel + li-ion battery
- **No long trips to replace batteries** or turn off monitors after the season

Accurate

- **Field data available in minutes** via the app, so you can make better decisions more quickly
- **Strong and stable connection** using cellular or WiFi for full sugarbush coverage - no complex, unreliable repeaters required

Simple

- **Install in 3 minutes or less** easy "Plug and Play"
- **Customizable** to support your unique maple operation
- **Easy to service** by replacing an individual sensor or monitor

Flexible

- **Designed for every size sugarbush** monitors connect to any base station, so easily add more for full coverage
- **Install 3 to 10,000 devices per base station** and add more as you grow

Solid

- **No external antenna** that can easily break
- **Leave it out year-round** - even in the snow and ice



Universal Base Station

Transmit your data by WiFi or cellular. Power via solar or wired power.



Pressure monitor

Monitor the pressure of sap at pumps or RO.



Vacuum monitor

Monitor the vacuum (pressure Hg) of your mainlines.



Tank Level Monitor

Measure the fill height of your tanks and fill rate.



Silo Level sensor

Measure the fill level of your silos without climbing a ladder.



Weather Station

Measure the weather conditions across your sugarbush.



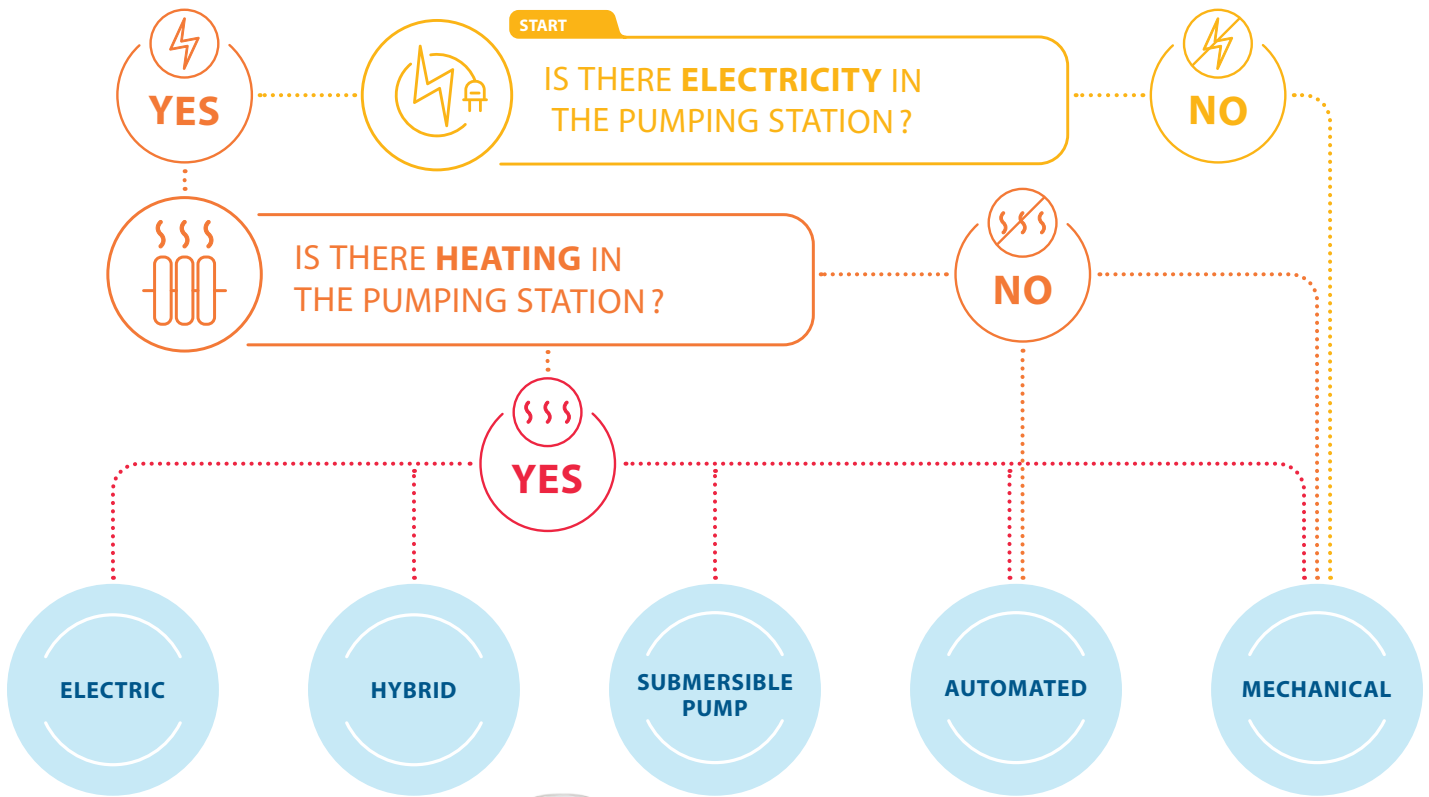
Flowmeter

Track exactly how much sap you're collecting.

Receive ALERTS on your smartphone



CHOOSE YOUR RELEASER



RELEASER'S ANATOMY



- A** Tank
- B** Manifold
- C** Inlets
- D** Inlets center height

MECHANICAL RELEASERS

MECHANICAL RELEASERS

This releaser works without electricity. It can be installed on a tank in a non-isolated station.



25A01-BHR218



25A01-BHR216



25A01-BHR211



25A01-BHR215-VC

MECHANICAL RELEASERS

	Capacity Taps	Tank			Manifold Size Ø in x L in	Inlets	
		Size Ø in x L in	Direction	Tanks		Height in the center	Inlets Qty. x Ø
25A01-BHR216	1 000	12" x 18"	V	Single	6" x 12"	20"	4 x 1"
25A01-BHR215	6 000	18" x 24"	H	Single	8" x 27"	26 ½"	6 x 1 ¼"
25A01-BHR215-VC	6 000	18" x 24"	H	Single	12" x 27"	26 ½"	6 x 1 ¼"
<i>Double</i>							
25A01-BHR211	1 000	8" x 16"	V	Double	6" x 18"	18"	4 x 1 ¼"
25A01-BHR210	1 500	12" x 12"	V	Double	6" x 27"	14"	6 x 1 ¼"
25A01-BHR213	3 000	12" x 18"	V	Double	6" x 27"	20"	6 x 1 ¼"
25A01-BHR217	4 000	12" x 18"	H	Double side-by-side	6" x 27"	20"	6 x 1 ¼"
25A01-BHR218	4 000	12" x 18"	H	Double	6" x 36"	20"	8 x 1 ½"
25A01-BHR217-2	5 000	12" x 24"	H	Double side-by-side	6" x 36"	21 ½"	8 x 1 ½"
25A01-BHR218-2	5 000	12" x 24"	H	Double	6" x 48"	20"	10 x 1 ½"
25A01-BHR219	10 000	18" x 18"	H	Double side-by-side	6" x 36"	24"	8 x 1 ½"
25A01-BHR220	10 000	18" x 18"	H	Double	6" x 42"	24"	10 x 1 ½"

Legend:

L = Length

H = Horizontal

V = Vertical

Ø = Diameter

in = Inches

Options

Ice blocking grid for manifold

3 inch valve (models for 10 000 taps)

MECHANICAL RELEASERS WITH JVC

MECHANICAL RELEASERS WITH JVC SYSTEM

These releasers operate without electricity. They can be installed on a storage tank, in a non-isolated station. The JVC system can reduce backflow by 50% thanks to its two valves which work independently. It is most efficient when vacuum is higher.



25A01-BHR219-JVC



25A01-BHR218-JVC



25A01-BHR210-JVC
Similar models:
25A01-BHR213-JVC



25A01-BHR217-JVC

MECHANICAL RELEASERS WITH JVC

	Capacity Taps	Size Ø in × L in	Tank		Manifold Size Ø in × L in	Inlets	
			Direction	Tanks		Height in the center	Inlets Qty. × Ø
25A01-BHR210-JVC	1 500	12" × 12"	V	Double	6" × 27"	14"	6 × 1 ¼"
25A01-BHR213-JVC	3 000	12" × 18"	V	Double	6" × 27"	20"	6 × 1 ¼"
25A01-BHR218-JVC	4 000	12" × 18"	H	Double	6" × 36"	20"	8 × 1 ½"
25A01-BHR218-2-JVC	5 000	12" × 24"	H	Double	6" × 48"	20"	10 × 1 ½"
25A01-BHR220-JVC	10 000	18" × 18"	H	Double	6" × 42"	24"	10 × 1 ½"
<i>Side-by-side</i>							
25A01-BHR217-JVC	4 000	12" × 18"	H	Double side-by-side	6" × 27"	20"	6 × 1 ¼"
25A01-BHR217-2-JVC	5 000	12" × 24"	H	Double side-by-side	6" × 36"	21 ½"	8 × 1 ½"
25A01-BHR219-JVC	10 000	18" × 18"	H	Double side-by-side	6" × 36"	24"	8 × 1 ½"

Legend:

L = Length

H = Horizontal

V = Vertical

Ø = Diameter

in = Inches

Options

Ice blocking grid for manifold

3 inch valve (models for 10 000 taps)

ELECTRIC RELEASERS

ELECTRIC RELEASERS

Simple to use and maintain, this releaser is very effective up to -25 vacuum thanks to the external pump (not included). It does not heat the sap and does not create any backflow.

Washing system (optional)

The washing system **is only available on horizontal models**. It effectively cleans the inside of the releaser when the vacuum is on.



25B01-BHR227-36



25B01-BHR224

ELECTRIC RELEASERS

	Capacity Taps	Tank		Manifold Size Ø in x L in	Inlets	
		Size Ø in x L in	Direction		Height in the center	Inlets Qty. x Ø
25B01-BHR224	1 000	12" x 24"	V	6" x 12"	24"	4 x 1"
25B01-BHR224-1	1 500	12" x 36"	V	6" x 27"	40"	6 x 1 ¼"
25B01-BHR225	5 000	18" x 24"	H	6" x 27"	33"	6 x 1 ¼"
25B01-BHR227-36	10 000	18" x 36"	H	6" x 42"	33"	10 x 1 ½"
25B01-BHR227-48	15 000	18" x 48"	H	6" x 52"	33"	12 x 1 ½"
25B01-BHR227-60	20 000	18" x 60"	H	6" x 60"	33"	15 x 1 ½"

Legend: L = Length H = Horizontal V = Vertical Ø = Diameter in = Inches

Options

- Ice blocking grid for manifold
- Addition of an emergency stop button*
- Addition of a 2nd switch for water pump*

- Washing system*
- Without manifold

*Not available on BHR224 and BHR224-1 models

HYBRID RELEASERS

HYBRID RELEASERS

During great flows, if the pumps fail, the mechanical mechanism takes over. It can also work with or without electricity, which is very advantageous during power failure. **Its installation is always done on a storage tank.**



2-JET WASHING SYSTEM
included on all horizontal hybrid releasers

HYBRID RELEASERS

	Capacity Taps	Tank		Manifold Size Ø in x L in	Inlets		Washing System included
		Size Ø in x L in	Direction		Height in the center	Inlets Qty. x Ø	
25G02-BHR215-24-HYB	4 000	18" x 24"	H	8" x 27"	26 ½"	6 x 1 ¼"	✓
25G02-BHR215-36-HYB	8 000	18" x 36"	H	8" x 42"	25"	10 x 1 ½"	✓
25G02-BHR215-48-HYB	18 000	18" x 48"	H	8" x 52"	25"	12 x 1 ½"	✓

Legend: L = Length H = Horizontal Ø = Diameter in = Inches

Options

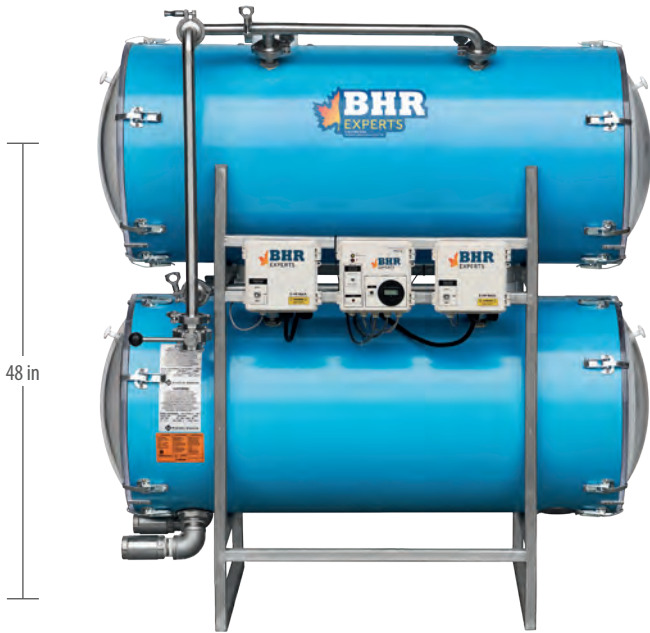
- Ice blocking grid for manifold

SUBMERSIBLE PUMP RELEASERS



2-JET WASHING SYSTEM

included on all horizontal submersible pump releases



48 in

25G01-BHR228-42D
2 PUMPS + PROBES + STAINLESS
PIPING (OPTIONAL)



25 1/2 in

25G01-BHR225-4F
2 PUMPS + PROBES



25 1/2 in

25G01-BHR227-48F
2 PUMPS + FLOATS

HORIZONTAL SUBMERSIBLE PUMP RELEASER

	Tank	Manifold	Inlets		Pumps		Washing System included
	Size Ø in × L in	Size Ø in × L in	Height in the center	Inlets Qty. × Ø in	Number	Type	
25G01-BHR225-4F	18" × 24"	6" × 27"	25 1/2"	6 × 1 1/4"	1 to 2	A, B	✓
25G01-BHR227-36F	18" × 36"	6" × 42"	25 1/2"	10 × 1 1/2"	1 to 2	A, B, C, D, E	✓
25G01-BHR227-48F	18" × 48"	6" × 52"	25 1/2"	12 × 1 1/2"	2 to 4	A, B, C, D, E, F	✓
25G01-BHR228-42D	18" × 42"	18" × 42"	48"	12 × 1 1/2"	2	A, B, C, D, E, F	✓

Legend:

L = Length

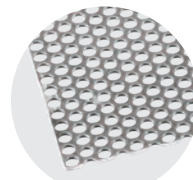
Ø = Diameter

in = Inches

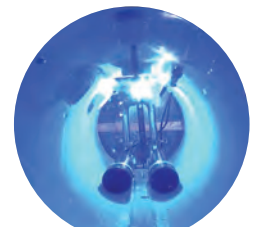
Options

- Lighting inside the base
- Ice blocking grid for manifold
- Alternation system*
- Drain valve

*Available only for models with 2 pumps



ICE BLOCKING GRID

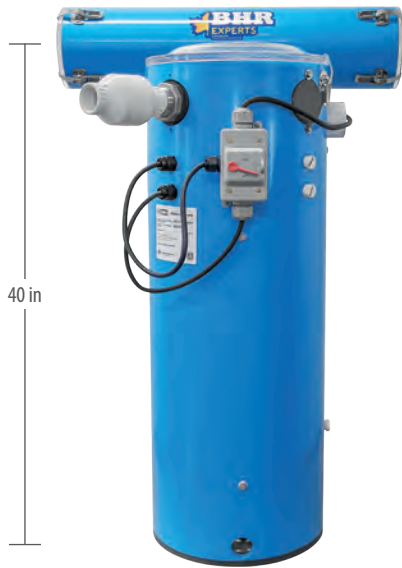


LIGHTING

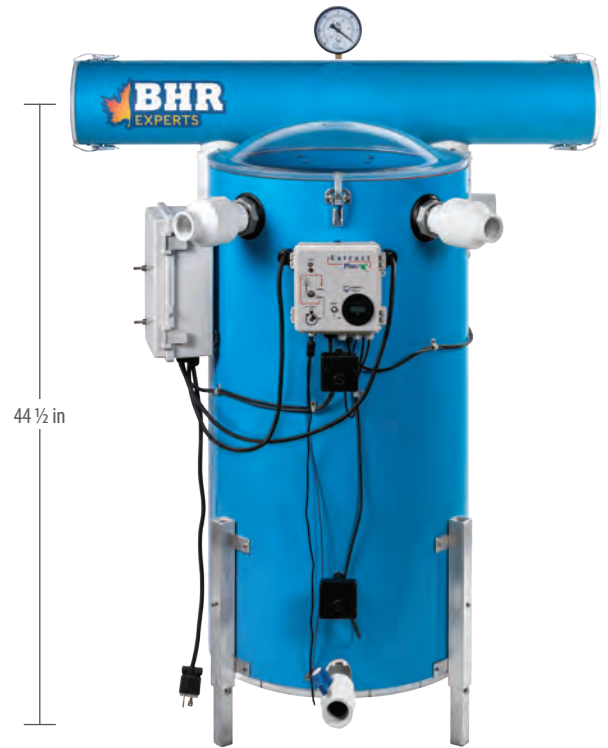
SUBMERSIBLE PUMP RELEASERS



25G01-BHR233-8F
1 PUMP + FLOAT



25G01-BHR233-M
1 PUMP + FLOAT



25G01-BHR234-M
2 PUMPS + PROBES

OUR MODELS OF VERTICAL SUBMERSIBLE PUMP RELEASER

	Tank	Manifold	Inlets		Pumps	
	Size Ø in × L in	Size Ø in × L in	Height in the center	Inlets Qty. × Ø in	Number	Type
25G01-BHR233-8F	8" × 30"	None	26"	2 × 1 1/2"	1	A or B
25G01-BHR233	12" × 36"	None	31 1/2"	3 × 1 1/2"	1 to 2	A or B or D
25G01-BHR233-M	12" × 36"	6" × 27"	39 1/2"	6 × 1 1/4"	1 to 2	A or B or D
25G01-BHR234	18" × 36"	None	36 1/2"	5 × 1 1/2"	1 to 3	A or B or D
25G01-BHR234-M	18" × 36"	6" × 42"	44 1/2"	10 × 1 1/2"	1 to 3	A or B or D
<i>Low Profile</i>						
25G01-BHR233-PB	12" × 30"	None	26"	3 × 1 1/2"	1 to 2	A or B
25G01-BHR233-PB-M	12" × 30"	6" × 27"	33"	6 × 1 1/4"	1 to 2	A or B
25G01-BHR234-PB	18" × 36"	None	30 1/2"	5 × 1 1/2"	1 to 3	A or B or D
25G01-BHR234-PB-M	18" × 36"	6" × 42"	38 1/2"	10 × 1 1/2"	1 to 3	A or B or D

Legend:

L = Length

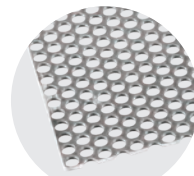
Ø = Diameter

in = Inches

Options

Ice blocking grid for manifold
Alternation system*

*Available only for models with 2 pumps and probes



ICE BLOCKING GRID

SUBMERSIBLE PUMP RELEASERS

CHOOSE YOUR Pump Starters

Two types of pump starters are available.

Float

Robust, it has a float that moves on a rod with the water level. The pump starts when the float reaches the switch and stops when it goes back down.

Probes

The electrodes sense the sap level in the tank to start or stop the pumps. They are equipped with an ice detection protection as well as a sensitivity adjustment to prevent unnecessary starting.

Stainless steel washing system piping (optional)



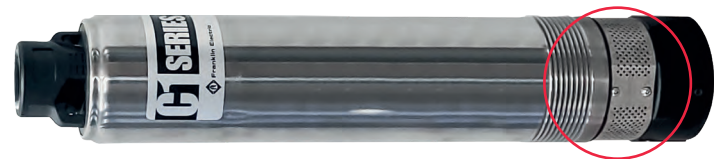
Horizontal releasers

CHOOSE YOUR Types of submersible pump

Six different pumps are available.

Horizontal submersible pump

- A** ¾ HP, 30 GPM
- B** ½ HP, 30 GPM
- C** 1 HP, 20 GPM
- D** 1 HP, 30 GPM
- E** 1 ½ HP, 30 GPM
- F** 1 ½ HP, 50 GPM



BOTTOM LOADING
(A, B, D PUMP)



CENTER LOADING
(C, E, F PUMP)

Vertical submersible pump

- A** ¾ HP, 30 GPM
- B** ½ HP, 30 GPM
- D** 1 HP, 30 GPM

Refer to your DSD STARS dealer to determine the right pump for your needs

Horizontal Releaser	Vertical Releaser
Pre-cut for 1 to 4 pumps	Pre-cut for 1 to 3 pumps
You can therefore add pumps according to the capacity of your releaser and according to your needs.	



INTERNAL SS 1 ¼"
Vertical releasers and some horizontal models



PITLESS
Horizontal releasers

The ingenuity of pre-drilling these release for **1 to 4 pumps** means you can keep your release and **easily** add an extra pump to suit your future needs. You can even install the pump on the left or right.

Alternation system (optional)

This system allows the pumps to be operated alternately during smaller flows and simultaneously during greater flows.

TRANSFER TANKS

TRANSFER TANKS

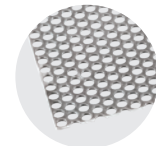
Similar to the manifold on a releaser, the transfer tank is a device that allows sap from multiple mainlines to be combined into one larger diameter mainline to reduce the amount of mainlines needed to connect the network to the pumping station. In addition, the vacuum air network connects to the device, ensuring its uniformity throughout the network.



VERTICAL TANK



HORIZONTAL TANK



ICE BLOCKING GRID

*OPTION: Available only on horizontal models

TRANSFER TANKS

	Size Ø x L	Direction	Sap inlets Qty x Ø	Sap outlet Ø	VACUUM Inlet Ø	Frame included
25D01-BHR246	6" x 12"	H	4 x 1"	1 1/2"	1 1/2"	
25D01-BHR247	6" x 18"	H	4 x 1 1/4"	1 1/2"	1 1/2"	
25D01-BHR247-S	6" x 18"	H	4 x 1 1/4"	1 1/2"	1 1/2"	✓
25D01-BHR247-2	6" x 27"	H	6 x 1 1/4"	1 1/2"	1 1/2"	
25D01-BHR247-2-S	6" x 27"	H	6 x 1 1/4"	1 1/2"	1 1/2"	✓
25D01-BHR247-3	6" x 36"	H	8 x 1 1/2"	1 1/2"	1 1/2"	
25D01-BHR247-3-S	6" x 36"	H	8 x 1 1/2"	1 1/2"	1 1/2"	✓
25D01-BHR256	6" x 42"	H	10 x 1 1/2"	1 1/2"	1 1/2"	
25D01-BHR256-S	6" x 42"	H	10 x 1 1/2"	1 1/2"	1 1/2"	✓
25D01-BHR249-2	8" x 27"	H	6 x 1 1/4"	1 1/2"	1 1/2"	
25D01-BHR249-2-S	8" x 27"	H	6 x 1 1/4"	1 1/2"	1 1/2"	✓
25D01-BHR258	8" x 42"	H	10 x 1 1/2"	1 1/2"	1 1/2"	
25D01-BHR258-S	8" x 42"	H	10 x 1 1/2"	1 1/2"	1 1/2"	✓
25D01-BHR248	12" x 18"	H	4 x 1 1/4"	1 1/2"	1 1/2"	
25D01-BHR248-S	12" x 18"	H	4 x 1 1/4"	1 1/2"	1 1/2"	✓
25D01-BHR250-2	12" x 24"	H	6 x 1 1/4"	1 1/2"	1 1/2"	
25D01-BHR250-2-S	12" x 24"	H	6 x 1 1/4"	1 1/2"	1 1/2"	✓
25D01-BHR253-2	18" x 24"	H	6 x 1 1/4"	2"	2"	
25D01-BHR253-2-S	18" x 24"	H	6 x 1 1/4"	2"	2"	✓
25D01-BHR253-3	18" x 36"	H	8 x 1 1/2"	2"	2"	
25D01-BHR253-3-S	18" x 36"	H	8 x 1 1/2"	2"	2"	✓
25D01-BHR253-4	18" x 48"	H	10 x 1 1/2"	2"	2"	
25D01-BHR254-4-S	18" x 48"	H	10 x 1 1/2"	2"	2"	✓
25D01-BHR248-3	12" x 18"	V	4 x 1 1/4"	1 1/2"	1 1/2"	NA
25D01-BHR250	12" x 24"	V	4 x 1 1/4"	1 1/2"	1 1/2"	NA
25D01-BHR252	12" x 36"	V	4 x 1 1/4"	1 1/2"	1 1/2"	NA

Legend:

L = Length

Ø = Diameter

in = Inches

NA = Not available



WATER TRAPS

WATER TRAPS

The water trap is a box that is installed between the releaser and the vacuum pump. It's equipped with an emergency stop switch to protect the vacuum pump. The switch cuts power to the pump motor when water collects inside the trap due to a failure of the releaser, preventing water from reaching your pump and causing damage.



25F01-BHR507-D



25F01-BHR506

WATER TRAPS

	Description	Size Ø x L
25F01-BHR505E	Water trap with emergency stop button. Includes a 100-micron envelope.	8" x 27"
25F01-BHR507-D	Electrical water trap with foam .	10" x 24"
25F01-BHR506	Water trap with emergency stop button Includes a 100-micron envelope.	12" x 24"

Legend:

L = Length

Ø = Diameter

in = Inches





High Performante Water and Vapor Trap
The most efficient on the market

PROTECTS all vacuum pumps

On dairy farms:

when cleaning with boiling water, the WÔ vap! recovers water vapors and milk fat; preventing contamination of the vacuum pump oil.

WÔ vap! is the solution to reduce the costs of oil changes, filter, labor and pollution.

Maple syrup production:

the WÔ vap! replaces water traps and protects vacuum pumps. Indispensable for maximum production without restrictions.



**VAPOR
AND WATER
RECUPERATOR**
**ESSENTIAL FOR
ALL VACUUM
PUMPS**

Water and vapor traps

Diameter of tanks	Valves	In (releaser)	Out (vacuum)	
8"	manual valves	2"	2"	25R01-08
8"	electric valves - automated - contact	2"	2"	25R03-08
12"	manual valves	3"	3"	25R01-12
12"	electric valves - automated - contact	3"	3"	25R03-12



Vacuum Gauges

Indicate the possibility of the resistance between the inlet and the outlet

4 levels of protection

- 1) in the tank from the inlet
- 2) in the tank from the outlet
- 3) in the inlet section
- 4) float between inlet and outlet

100 Microns Filter on primary inlet

2 drainable water tanks without vacuum loss

(optional) External filter 100 Microns

To be used when lots of dirt and contaminants are present

Patent Pending PCT

REVERSE SLOPE RELEASESERS

REVERSE SLOPE RELEASESERS

Used when there is a reverse slope, the reverse slope releaser can send the sap up to a maximum height of 20 feet depending on the vacuum. It must be installed with two pipes, one for air and one for sap, so that during the release, the vacuum is found in the sap inlet manifold. This system greatly reduces the recoil effect.

25C01-BHR212-PS01



REVERSE SLOPE RELEASESERS WITH SOLAR PANEL AND CONTROL BOX

	Capacity Taps	Tank		Manifold Size Ø in x L in	Inlets	
		Size Ø in x L in	Tanks		Height in the center	Inlets Qty. x Ø
25C01-BHR212-PS01	500	8" x 16"	Single	6" x 18"	18"	4 x 1"
25C01-BHR212-PS02	1000	12" x 18"	Single	8" x 16"	21"	4 x 1"
25C01-BHR212-PS03	1500	12" x 18"	Single	8" x 27"	21"	6 x 1 1/4"

Legend: L = Length Ø = Diameter in = Inches



25C01-BHR212-NV1

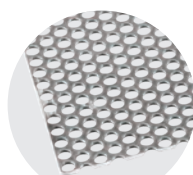
REVERSE SLOPE RELEASESERS

	Capacity Taps	Tank		Manifold Size Ø in x L in	Inlets	
		Size Ø in x L in	Tanks		Height in the center	Inlets Qty. x Ø
25C01-BHR212-NV1	400	10" x 18"	Single	6" x 18"	21"	4 x 1 1/4"
25C01-BHR212-NV	800	12" x 18"	Single	8" x 16"	21"	4 x 1 1/4"
25C01-BHR214-NV	2500	12" x 18"	Double	8" x 27"	21"	6 x 1 1/4"

Legend: L = Length Ø = Diameter in = Inches

Option

Ice blocking grid for manifold



ICE BLOCKING GRID



25C01-BHR214-NV

ACCESSORIES BHR EXPERTS



MEMBRANE STORAGE VESSEL

65Z01-BHR255

Size
36"



TANK FLOAT

TANK FLOATS

	Size
25I01-BHR432-36	36"
25I01-BHR432-48	48"
25I01-BHR432-60	60"
25I01-BHR432-72	72"

RELEASER SUPPORT FOR TANK

Maximum size: 1" x 5'



25I01-BHR718-1



25I01-BHR718-2



25I01-BHR718-3

MEMBRANE STORAGE VESSEL

COMPLETE DRAIN VALVE

For horizontal submersible pump releasers.

25I01-BHR718-1	for BHR212 and BHR212-NV1 series
25I01-BHR718-2	for BHR225 and BHR227 series
25I01-BHR718-3	for BHR233 and BHR234 series



25I01-BHR718-4

COMPLETE DRAINAGE VALVE KIT

25I01-BHR718-4	for BHR225, BHR227, BHR233 and BHR234 series
----------------	--

PRESSURE REGULATOR

25I03-BHR312



EMERGENCY STOP SYSTEM

NEW PRODUCT

This system is designed to prevent damage to the vacuum pump during a power failure or maple sap overflow at your releaser.

HIGHLY RECOMMENDED

ON ALL ELECTRIC RELEASES AND SUBMERSIBLE PUMP RELEASES

For horizontal releaser

25I01-URG150-01

25I01-URG200-01

For vertical releaser

25I01-UR150-02

25I01-UR200-02



Installation on a horizontal releaser (inside view)



Installation on a vertical releaser (inside view)



Horizontal Releaser

ECOVAP EVAPORATOR

100% ELECTRIC, AUTOMATISED & INTELLIGENT

- Receive informative emails
- Operate your ECOVAP remotely via : telephone, tablet and computer



More than

3.5 DRUMS
of SYRUP per hour

concentrate from
8° to 20°
BRIX

ECOVAP allows the production of maple syrup easily and much more economically

with the same taste and color as those produced by experienced producers using a wood or oil evaporator while using low °brix osmosis.

The use of high °BRIX (Ro) osmosis eliminates part of the nutritional value of maple syrup.

ECOVAP EVAPORATOR

Specifications

- Fully Automated
- Receive informative emails
- Operate your ECOVAP remotely via : telephone, tablet and computer
- Operates with very little supervision
- Very low energy consumption per gallon of maple syrup produced
- Excellent control and great stability of syrup quality according to your choice of color and desired °BRIX.
- Reduces fire risks
- Impossible to burn a pan



NEW!
See what's happening inside
of you ECOVAP
thanks to PORTHOLES

- Instant and risk-free shutdown
- Recovers all the energy contained in the vapor
- No need to replace your osmosis (Ro)
- No need stacks neither for smoke nor for steam
- 7 models available to meet your needs
- Ecological, GHG-free
- Government energy saving grants may be available in your province or state for the purchase of high efficiency energy saving electric evaporators!
- Proven technology since 2013
- Patented

Capacity of Maple Syrup Produced / hour, based on °Brix of concentrated sap

Model	8° Brix			10° Brix			12° Brix			14° Brix			16° Brix			18° Brix			20° Brix			21° Brix			
	US Gal.	Imp. Gal.	Liters	US Gal.	Imp. Gal.	Liters	US Gal.	Imp. Gal.	Liters	US Gal.	Imp. Gal.	Liters	US Gal.	Imp. Gal.	Liters	US Gal.	Imp. Gal.	Liters	US Gal.	Imp. Gal.	Liters	US Gal.	Imp. Gal.	Liters	
ECOVAP 125	10.8	9	40.9	14.4	12	54.6	16.8	14	63.6	21.6	18	81.8	25.2	21	95.5	--	--	--	--	--	--	--	--	--	--
ECOVAP 080	8.4	7	31.8	10.8	9	40.9	13.2	11	50.0	16.8	14	63.6	19.2	16	72.7	--	--	--	--	--	--	--	--	--	--
ECOVAP 160	15.6	13	59.1	20.4	17	77.3	26.4	22	100.0	31.2	26	118.2	37.2	31	140.9	--	--	--	--	--	--	--	--	--	--
ECOVAP 225	22.8	19	86.4	28.8	24	109.1	36.0	30	136.4	44.4	37	168.2	52.8	44	200	--	--	--	--	--	--	--	--	--	--
ECOVAP 225 Pw	22.8	19	86.4	28.8	24	109.1	36.0	30	136.4	44.4	37	168.2	52.8	44	200	61.3	51	231.8	70.9	59	268.2	76.9	64	290.9	
ECOVAP 340	32.4	27	122.7	43.2	36	163.7	52.8	44	200	64.9	54	245.5	76.9	64	290.9	--	--	--	--	--	--	--	--	--	--
ECOVAP 340 Pw	32.4	27	122.7	43.2	36	163.7	52.8	44	200	64.9	54	245.5	76.9	64	290.9	90.1	75	341.0	104.5	87	395.5	111.7	93	422.8	
ECOVAP 440 Pw	43.2	36	163.7	56.4	47	213.7	69.7	58	263.7	85.3	71	322.8	100.9	84	381.9	117.7	98	445.5	136.9	114	518.2	146.5	122	554.6	

ECOVAP™ evaporator Technical specifications

Product number	Description	Dimensions	Amp max.	Breaker #1	Breaker #2	Breaker #3	Breaker #4
EV125-230	Single-phase	45" X 17"	180	150A	75A	----	----
EV080-230	Single-phase	42" X 15"	130	125A	75A	----	----
EV080-575	Three-phase	42" X 15"	30	30A	30A	----	----
EV160-230	Single-phase	56" X 17"	235	200A	150A	----	----
EV160-575	Three-phase	56" X 17"	55	50A	40A	----	----
EV225-230	Single-phase	70" X 17"	275	250A	150A	----	----
EV225-575	Three-phase	70" X 17"	65	75A	40A	----	----
EV225-230-PW	Single-phase - Power unit	70" X 17"	400	250A	150A	2X 80A	15A/120V
EV225-575-PW	Three-phase - Power unit	70" X 17"	94	75A	40A	30A	15A/120V
EV340-230	Single-phase	84" X 21"	450	400A	150A	----	----
EV340-575	Three-phase	84" X 21"	85	90A	40A	----	----
EV340-230-PW	Single-phase - Power unit	84" X 21"	617	400A	150A	2X 125A	15A/120V
EV340-575-PW	Three-phase - Power unit	84" X 21"	126	90A	40A	60A	15A/120V
EV440-575-PW	Three-phase - Power unit	101" X 22"	150	100A	40A	60A	15A/120V
EV440-230-PW	Single-phase - Power unit	101" X 22"	742	550A	150A	2X 125A	15A/120V

HP WOOD EVAPORATOR

TOLE INOX



High performance wood Evaporator includes the following items :

- 1x flue pan
- Flat pans (qty and dimensions depending on evaporator size)
- 1x additional flat pan (dimensions depending on evaporator size)
- 1x water pan (dimensions depending on evaporator size)
- 1x side gutter
- 1x entry float box
- 1x transfer float box (STD or LX depending on evaporator size)
- 2x visual sap level
- 1 ½" transfer
- Transfer adapter & ball valve
- Closed hood + opened with 2 hood lights
- 1x concentrate preheater
- 6x vapor stacks (dimensions depending on evaporator size)
- 1x base stack (dimensions depending on evaporator size)
- Smoke stacks (qty & dimensions depending on evaporator size)
- 3x roof stacks
- 3x collars
- 3x stack covers
- 1x dipper (2' to 4' : 5" / 5' to 6' : 6")
- 1x support for dipper
- 1x 3" syrup gauge, 9" stem
- 3x 2" ext. plugs

HP WOOD EVAPORATOR

Specifications

- Refractory cement interior which aims to increase its efficiency (factory made)
- Forced air under the grids and above the door
- Airtight refractory cement insulated door
- Variable speed fan
- Flue pan and flat pan made of stainless steel type 304 BA finish (mirror). Sides 20 ga thickness and bottom 22 ga thickness
- Food grade argon welding
- Efficient and quick-response control float
- Transfer between pans with advanced design
- Enclosed stainless steel hood with access door
- Gutter and recovery pan for water
- Stainless steel preheater, easy to clean
- Evaporator base is made of stainless steel type 304 BA
- Several sizes available from 2 ½' X 8' to 6' X 16'
- Custom sizes also available



Airtight refractory cement insulated door



Preheater included inside the hood

High Performance Wood evaporator Technical specifications

Product number	Dimensions	Qty Airtight insulated door	Flue Pan	Flat Pan	Add. Pan	Water Pan	Transfer box	Ball Valve	Vapor	Base Stack	Smoke
EHP-30-096	2 ½' X 8'	----	1X 30"x60"	2X 30"x18"	1X 30"x18"	1X 30"x5"	STD	1 ¼"	6X 10"	1X 12"x6'	4X 12"
EHP-30-120	2 ½' X 10'	1	1X 30"x84"	2X 30"x18"	1X 30"x18"	1X 30"x5"	STD	1 ¼"	6X 12"	1X 12"x6'	4X 12"
EHP-36-120	3' X 10'	1	1X 36"x84"	2X 36"x18"	1X 36"x18"	1X 36"x5"	LX	1 ¼"	6X 15"	1X 15"x6'	4X 15"
EHP-36-144	3' X 12'	1	1X 36"x104"	2X 36"x20"	1X 36"x20"	1X 36"x5"	LX	1 ¼"	6X 15"	1X 15"x6'	4X 15"
EHP-42-144	3 ½' X 12'	1	1X 42"x104"	2X 42"x20"	1X 42"x20"	1X 42"x5"	LX	1 ¼"	6X 15"	1X 16"x6'	4X 16"
EHP-48-168	4' X 14'	2	1X 48"x120"	2X 48"x24"	1X 48"x24"	1X 48"x5"	LX	1 ¼"	6X 15"	1X 20"x10'	5X 20"
EHP-60-168	5' X 14'	2	1X 60"x120"	2X 60"x24"	1X 60"x24"	1X 60"x5"	LX	1 ½"	6X 18"	1X 20"x10'	4X 20"
EHP-72-168	6' X 14'	2	1X 72"x120"	2X 72"x24"	1X 72"x24"	1X 72"x5"	LX	1 ½"	6X 20"	1X 24"x10'	5X 24"
EHP-72-192	6' X 16'	2	1X 72"x120"	3X 72"x24"	1X 72"x24"	1X 72"x5"	LX	1 ½"	6X 20"	1X 24"x10'	6X 24"

WOOD EVAPORATOR

**TOLE
INOX**



Wood Evaporator includes the following items :

- 1x flue pan
- Flat pans (qty depending on evaporator size)
- 1x entry float box
- 1x transfer float box (STD or LX depending on evaporator size)
- 2x visual sap level
- Pan Output Adapter and ball valve
- 1x base stack (dimensions depending on evaporator size)
- 1x roof stack
- Smoke pipes (qty & dimensions depending on evaporator size)
- 1x collar
- 1x stack cover (model depending on evaporator size)
- 1x dipper (2' to 4' : 5" / 5' to 6' : 6")
- 1x support for dipper
- 1x syrup 3" gauge, 9" stem
- 3x 2" ext. plugs (excluding 2'x6')

WOOD EVAPORATOR

Specifications

- The base of the evaporator is made of stainless steel type 304 BA
- Thightener
- Flue pan and flat pan made of stainless steel type 304 BA finish (mirror). Sides 20 ga thickness and bottom 22 ga thickness
- Food grade argon welding
- Efficient & quick-response control float
- Transfer between pans with advanced design
- Several sizes available from 2' X 6' to 6' X 16'
- Custom sizes also available



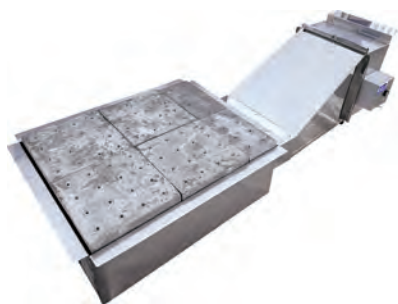
Airtight refractory cement insulated door

Wood evaporator Technical specifications

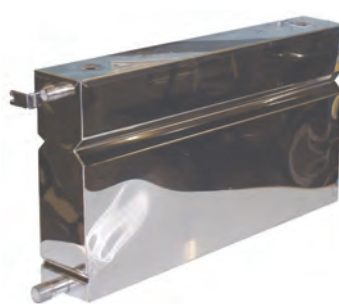
Product number	Qty Airtight insulated door	Dimensions	Flue Pan	Flat Pan	Tile	Transfer box	Transfer	Ball Valve	Base Stack	Smoke	Stack cover
EVB-24-072	1	2'X6'	1X 24"x48"	1X 24"x24"	No	STD	½"	1"	1X 10"x4'	2X 10"	Chinese
EVB-24-096	1	2'X8'	1X 24"x60"	2X 24"x18"	No	STD	1 ½"	1"	1X 10"x5'	3X 10"	Chinese
EVB-30-096	1	2 ½'X8'	1X 30"x60"	2X 30"x18"	No	STD	1 ½"	1 ¼"	1X 12"x5'	3X 12"	Chinese
EVB-30-120	1	2 ½'X10'	1X 30"x84"	2X 30"x18"	No	STD	1 ½"	1 ¼"	1X 12"x5'	3X 12"	Chinese
EVB-36-120	1	3'X10'	1X 36"x84"	2X 36"x18"	Yes	STD	1 ½"	1 ¼"	1X 15"x6'	3X 15"	Tilt stack
EVB-36-144	1	3'X12'	1X 36"x104"	2X 36"x20"	Yes	LX	1 ½"	1 ¼"	1X 15"x6'	4X 15"	Tilt stack
EVB-42-144	1	3 ½'X12'	1X 42"x104"	2X 42"x20"	Yes	LX	1 ½"	1 ¼"	1X 18"x6'	4X 18"	Tilt stack
EVB-48-144	2	4'X12'	1X 48"x104"	2X 48"x20"	Yes	LX	1 ½"	1 ¼"	1X 20"x8'	4X 20"	Tilt stack
EVB-48-168	2	4'X14'	1X 48"x120"	2X 48"x24"	Yes	LX	1 ½"	1 ¼"	1X 20"x8'	4X 20"	Tilt stack
EVB-60-168	2	5'X14'	1X 60"x120"	2X 60"x24"	Yes	LX	1 ½"	1 ½"	1X 22"x10'	4X 22"	Tilt stack
EVB-60-192	2	5'X16'	1X 60"x120"	3X 60"x24"	Yes	LX	1 ½"	1 ½"	1X 22"x10'	4X 22"	Tilt stack
EVB-72-168	2	6'X14'	1X 72"x120"	2X 72"x24"	Yes	LX	1 ½"	1 ½"	1X 24"x10'	5X 24"	Tilt stack
EVB-72-192	2	6'X16'	1X 72"x120"	3X 72"x24"	Yes	LX	1 ½"	1 ½"	1X 24"x10'	6X 24"	Tilt stack

AVAILABLE OPTIONS

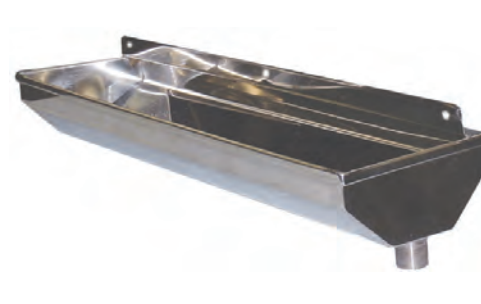
Econowood



Water pan



Side gutter



OIL EVAPORATOR

**TOLE
INOX**



Oil Evaporator includes the following items :

- 1x burner cover
- 1x Detecto
- 1x flue pan
- Flat pans
(qty & dimensions depending on evaporator size)
- 1x additional plat pan
(dimensions depending on evaporator size)
- 1x water pan
(dimensions depending on evaporator size)
- 1x side gutter
- 1x entry float box
- 1x transfer float box
(STD or LX depending on evaporator size)
- 2x visual sap level
- 1 ½" transfer
- Transfer adaptater & ball valve
- Closed hood + opened with 2 hood lights
- 1x concentrate preheater
- 6x vapor stacks
(dimensions depending on evaporator size)
- 1x base stack
(dimensions depending on evaporator size)
- Round smoke stacks
(qty & dimensions depending on evaporator size)
- 3x roof stacks
- 3x collars
- 3x stack covers
- 1x dipper (2' to 4' : 5" / 5' to 6' : 6")
- 1x support for dipper
- 1x 3" syrup gauge , 9" stem
- 3x 2" ext. plugs

OIL EVAPORATOR

Specifications

- High quality Beckett burner
- Insulated burner cover
- Easy to use control panel
- Flue pan and flat pan made of stainless steel type 304 BA finish (mirror). Sides 20 ga thickness and bottom 22 ga thickness
- Food grade argon welding
- Easy to use quick-response float control
- Transfer between pans with advanced design
- Enclosed stainless steel hood with access door
- Gutter and recovery pan for water
- Stainless steel preheater, easy to clean
- Evaporator base is made of stainless steel type 304 BA
- Several sizes available from 2 ½' X 8' to 6' X 16'
- Custom sizes also available

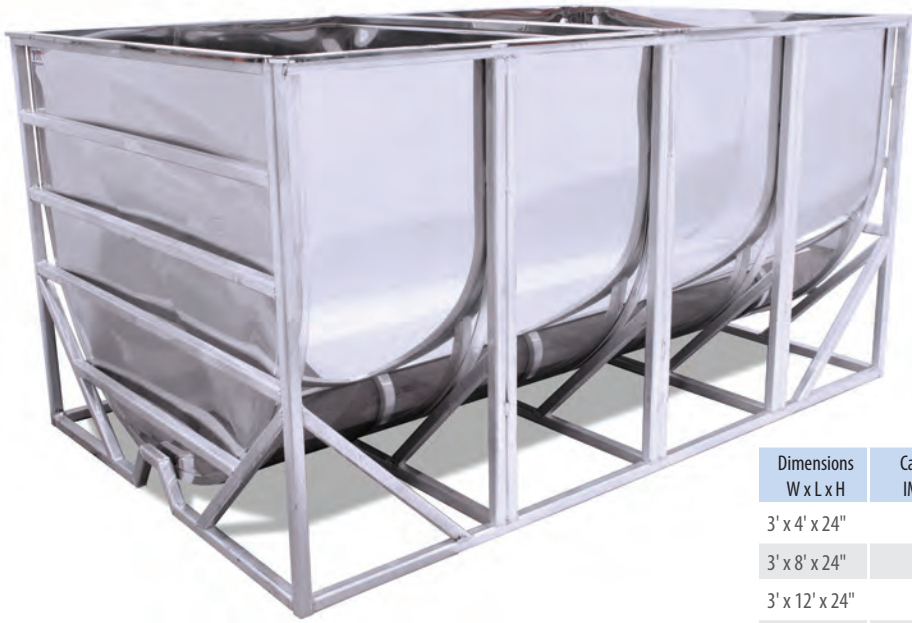
WE OFFER A COMPLETE LINE OF OIL EVAPORATORS FOR THE SMALL SUGAR BUSHES OR FOR THE INDUSTRIAL PRODUCTION OF MAPLE SYRUP.

The choice of our components and the well thought manufacturing design of our equipment offer a high performance and complete system for making quality maple syrup.

Oil evaporator Technical specifications

Product number	Description	Flue Pan	Flat Pan	Add. Pan	Water Pan	Transfer box	Ball Valve	Vapor	Base Stack	Smoke
Evh-30-096	2 ½' X 8'	1X 30"x60"	2X 30"x18"	1X 30"x18"	1X 30"x5"	STD	1 ¼"	6X 10"	1X 12"x6'	3X 12"
Evh-30-120	2 ½' X 10'	1X 30"x84"	2X 30"x18"	1X 30"x18"	1X 30"x5"	STD	1 ¼"	6X 12"	1X 12"x6'	3X 12"
Evh-36-120	3' X 10'	1X 36"x84"	2X 36"x18"	1X 36"x18"	1X 36"x5"	LX	1 ¼"	6X 15"	1X 15"x6'	3X 15"
Evh-36-144	3' X 12'	1X 36"x104"	2X 36"x20"	1X 36"x20"	1X 36"x5"	LX	1 ¼"	6X 15"	1X 15"x6'	3X 15"
Evh-42-144	3 ½' X 12'	1X 42"x104"	2X 42"x20"	1X 42"x20"	1X 42"x5"	LX	1 ¼"	6X 15"	1X 15"x6'	3X 15"
Evh-48-168	4' X 14'	1X 48"x120"	2X 48"x24"	1X 48"x24"	1X 48"x5"	LX	1 ¼"	6X 15"	1X 15"x6'	4X 15"
Evh-60-168	5' X 14'	1X 60"x120"	2X 60"x24"	1X 60"x24"	1X 60"x5"	LX	1 ½"	6X 18"	1X 20"x6'	4X 20"
Evh-72-168	6' X 14'	1X 72"x120"	2X 72"x24"	1X 72"x24"	1X 72"x5"	LX	1 ½"	6X 20"	1X 22"x6'	4X 22"
Evh-72-192	6' X 16'	1X 72"x120"	3X 72"x24"	1X 72"x24"	1X 72"x5"	LX	1 ½"	6X 20"	1X 22"x6'	5X 22"

STAINLESS STEEL TANKS



Tanks are made of stainless steel 304 - 20ga - BA
The frame is made of aluminum

- Smooth welded joints, facilitates cleaning
- Argon Welded (TIG) no lead is used in our assembly joints
- Several options available :
 - Output position (front/underneath)
 - Overflow (with/without)
 - Raise (with/without)



High-quality welds

Accessories

Releaser support for Tank

25H02-BHR120C 1" wide - 5' max length

Tank Float

25I01-BHR432-36 Tank Float 36"

25I01-BHR432-48 Tank Float 48"

25I01-BHR432-60 Tank Float 60"

25I01-BHR432-72 Tank Float 72"



For dimensions overall, add

- 3 5/8" to the width and to the length
- 2" to the height for the output below
- 3 1/2" to the height the front output

Dimensions W x L x H	Capacity IMP gal	Capacity US gal	Dimensions W x L x H	Capacity IMP gal	Capacity US gal
3' x 4' x 24"	125	150	*4' x 10' x 48"	805	966
3' x 8' x 24"	250	301	*4' x 12' x 48"	970	1164
3' x 12' x 24"	376	451	*4' x 16' x 48"	1290	1549
3' x 4' x 30"	162	195	4' x 8' x 56"	840	1014
3' x 8' x 30"	325	391	4' x 10' x 56"	1055	1267
3' x 12' x 30"	488	586	4' x 12' x 56"	1265	1521
3' x 4' x 36"	200	240	4' x 16' x 56"	1685	2028
3' x 8' x 36"	400	480	4 1/2' x 10' x 36"	705	847
3' x 12' x 36"	600	721	4 1/2' x 12' x 36"	845	1016
3' x 4' x 42"	237	285	4 1/2' x 16' x 36"	1130	1355
3' x 8' x 42"	475	570	4 1/2' x 10' x 42"	845	1015
3' x 10' x 42"	594	713	4 1/2' x 12' x 42"	1015	1218
3' x 12' x 42"	713	855	4 1/2' x 16' x 42"	1355	1625
3' x 16' x 42"	950	1141	4 1/2' x 10' x 48"	978	1183
4' x 4' x 24"	156	188	4 1/2' x 12' x 48"	1184	1420
4' x 8' x 24"	313	376	4 1/2' x 16' x 48"	1580	1894
4' x 10' x 24"	391	470	4 1/2' x 10' x 54"	1125	1352
4' x 4' x 30"	206	247	4 1/2' x 12' x 54"	1350	1622
4' x 8' x 30"	412	495	4 1/2' x 16' x 54"	1800	2163
4' x 10' x 30"	516	619	4 1/2' x 10' x 60"	1265	1520
4' x 12' x 30"	620	743	4 1/2' x 12' x 60"	1520	1824
4' x 16' x 30"	826	991	4 1/2' x 16' x 60"	2025	2432
4' x 4' x 36"	256	307	5' x 10' x 36"	765	921
4' x 8' x 36"	512	615	5' x 12' x 36"	920	1105
4' x 10' x 36"	640	769	5' x 16' x 36"	1229	1474
4' x 12' x 36"	769	923	5' x 10' x 42"	924	1108
4' x 16' x 36"	1025	1230	5' x 12' x 42"	1109	1330
4' x 4' x 42"	306	367	5' x 16' x 42"	1478	1773
4' x 8' x 42"	612	735	5' x 10' x 48"	1080	1295
4' x 10' x 42"	765	918	5' x 12' x 48"	1296	1554
4' x 12' x 42"	918	1102	5' x 16' x 48"	1728	2072
4' x 16' x 42"	1225	1470	5' x 10' x 54"	1236	1482
*4' x 4' x 48"	320	384	5' x 12' x 54"	1480	1778
*4' x 8' x 48"	645	774	5' x 16' x 54"	1978	2371

* Interior height is 44"

More sizes available

PANS, WATER JACKET TANKS

Syrup filter tank

Single rectangular on wheels

20 gal SIR-RT-20GAL-ROUES

34 gal SIR-RT-34GAL-ROUES

Double

2 x 16 gal SIR-DB-NI-2X16GAL

2 x 20 gal SIR-DB-NI-2X20GAL

2 x 34 gal SIR-DB-NI-2X34GAL

2 x 40 gal SIR-DB-NI-2X40GAL

2 x 16 gal - Insulated SIR-DB-IS-2X16GAL

2 x 20 gal - Insulated SIR-DB-IS-2X20GAL

2 x 34 gal - Insulated SIR-DB-IS-2X34GAL

2 x 40 gal - Insulated SIR-DB-IS-2X40GAL

Triple

3 x 30 gal SIR-TR-NI-3X40GAL



Auto draw-off

1 1/2" 60001-150

2" 60001-200

Round

15 gal (1 syrup filter support) SIR-RD-15GAL-SUP1T

15 gal (without syrup filter support) SIR-RD-15GAL-SSUP

20 gal (2 syrup filter supports) SIR-RD-20GAL-SUP2T

20 gal (without syrup filter support) SIR-RD-20GAL-SSUP

40 gal (3 syrup filter supports) SIR-RD-40GAL-SUP3T

40 gal without syrup filter support SIR-RD-40GAL-SSUP



Auto draw-off probe

1 1/2"-2" 60001-SND

Support on wheels for syrup filter tank

15 gal SIR-SUP-RD-15GAL

20 gal SIR-SUP-RD-20GAL

40 gal SIR-SUP-RD-40GAL



Propane Bottling

80J03-15-15 Propane bottling pan with stainless steel stand. Includes: 15"x15" pan, burner, stand, shelf, water pan, cover, valve

80J04-15-15 Pan 15" x 15" for propane bottler w/ 1/2" valve

80J05-15-15 Water pan for 15" x 15" propane bottler

80J07-001 Propane burner

80J06-15-15 Stand and shelf for 15" x 15" propane bottler



Electric Water Jacket Tank

16 gal (19gal US), 2 x 3 000 W Heating elements 80D02-16-2-3000

20 gal (22gal US), 2 x 3 000 W Heating elements 80D02-20-2-3000

35 gal (42gal US), 2 x 3 000 W Heating elements 80D02-35-2-3000

40 gal (48gal US), 2 x 3 000 W Heating elements 80D02-40-2-3000

Maple butter machine

3/4 hp - 3/4" pump output - 3 gal BAB-STANDARD



Glass tubing for sap

5/8" OD x 12" Long

60Y01-625-12

STAINLESS STEEL PRODUCTS



Hoods



Chinese hats

Other stainless steel products available

- Roof Jacks
- Stack Hats (Tilt, Chinese)
- Round Stacks (Smoke, Steam)
- Collars
- Base stacks
- Hoods
- Pipes
- Preheater

Many sizes available



Base stacks





NEW!

**TOILE
INOX**

SHOWROOM

Located in the **DSD STARS Store - Thetford**



Come see

our equipments & consultants!



1649, boulevard Frontenac Est, Thetford Mines, QC G6G 6P6

STAINLESS STEEL FILTER PRESS



12" x 12"

Model that allows the installation of 1 to 10 filtration plates with 12 ton hydraulic and air jack

10 plates 12" x 12" = 1 440" of filtration



Industrial and Maple Syrup Large size model

with 20 ton hydraulic and air jack

Accessories included:

- Drainage valve
- Industrial wheels with bearing
- Inclined pan to ease emptying
- Drain plug on the pan
- Stainless steel jack rod
- Divider to reduce the number of plates
- 2 sets of filters for each syrup press
- Support to install the pump



20" x 20"

Model that allows the installation of 7 to 20 filtration plates with 20 ton hydraulic and air jack

7 plates 20" x 20" = 2 880" of filtration

Determine the quantity of plates required

	1 Plate = 1 000 Taps
12" x 12" Filter press	Example : 2 Plates = 2 000 Taps 1 Filtration Plate = about 3 drums
20" x 20" Filter press	Example : 7 Filtration Plates = about 21 drums
20 plaques 20" x 20" = 8 000" de filtration	



PLIERS, TOOLS, EXTRACTORS



Spout adapter extractor - DSD

35A03-71298



Slider Connector Plier 3/16" & 5/16"

35A13-71280



35A16-71209

Stripping plier

- 35A16-71206 classic 5/16" - without cutter
- 35A16-71207 Pro Stripper 2.0 - with blade
- 35A16-71209 Pro Stripper 2.0 - 4 functions
- 35A16-71210 4 functions
- 35A16-71211 Pro Stripper 2.0 - compact - without blade
- 35A16-71212 Pro Stripper 2.0 - compact - 3 functions



Elbow spout adapter extractor

35A03-71292

35A03-71296 DSD



Installation tool

- 35L04-001 for 5/16" tube
- 35L04-002 for 3/16" tube



Guy wire tensioner

35L03-002



Tapping Hammer 2 faces

35L01-001



Retractable Ruler
on model
35A18-71811

PRUNO

LOAC

Tapping Hammer with Spout Remover

- 35A18-71806 PRUNO
- 35A18-71811 PRUNO with retractable ruler
- 35L01-003 LOAC



PRUNO

LOAC

Tapping Hammer with Axe

- 35A18-71807 PRUNO
- 35L01-004 LOAC



PRUNO

Retractable Ruler
on model
35A18-71813

Tapping Hammer with scraper

- 35A18-71808 PRUNO
- 35A18-71813 PRUNO with retractable ruler

PLIERS, TOOLS, EXTRACTORS



Deluxe tubing installation pliers for 5/16" tubing

35A02-71101	-----	- with auto tension adjust - cutter & flaring device	
35A02-71106	35A02-71106-P	- with auto tension adjust - cutter	



Mini tubing installation plier for tubing

35A02-71111	-----	5/16" - adjustable - with cutter	
35A02-711111	-----	3/16" - adjustable - with cutter	



Mini tubing installation plier with adjustment screw

35A02-71109	-----	5/16" - no cutter - no flaring device	
35A02-711091	35A02-711091-P	3/16" - no cutter - no flaring device	



Repair pliers automatic tensioning

35A05-71401	-----	- with flaring device - no cutter	
-------------	-------	--------------------------------------	--



Compact fitting insert pliers w/ Vise Grip 4wr

35A01-71065	35A01-71065-P	5/16" - with lateral cutter	
35A01-710651	35A01-710651-P	3/16" - with lateral cutter	



Compact fitting insert pliers w/ vise grip 4wr

35A01-71060	35A01-71060-P	- no lateral cutter - flaring device	
-------------	---------------	---	--



5/16" pipe installation clamp screw adjustment

35A02-71131	-----	- no lateral cutter - no flaring device	
35A02-71146	-----	- with lateral cutter	



Compact insertion plier for angled spouts (30° to 115°)

35A01-71067	35A01-71067-P	5/16" - with lateral cutter	
35A01-71066	-----	5/16" - no lateral cutter	
35A01-710671	-----	3/16" - with lateral cutter	



Compact fitting insert pliers

35A01-71055	35A01-71055-P	- with lateral cutter - with flaring device - with 5/16" jaws	
35A01-71050	35A01-71050-P	- with lateral cutter - no flaring device - with 5/16" jaws	
35A01-710551	-----	- with lateral cutter - with flaring device - with 3/16" jaws	
35A01-710501	-----	- with lateral cutter - no flaring device - with 3/16" jaws	



Mini tubing installation plier

35A02-711121	35A02-711121-P	3/16" - no cutter - no flaring device	
--------------	----------------	---	--



Mini Tubing Installation Plier with adjustment screw for 3/16"

35A02-711081	with cutter		
--------------	-------------	--	--



Compact fitting insert pliers 5/16"

35A01-710505	35A01-710505-P	- no cutter - no flaring device	
--------------	----------------	------------------------------------	--

PLIERS, TOOLS, EXTRACTORS



Compact saddle fitting insert pliers
5/16" for 1" to 1 1/4" mainline

35A01-71075



Wire-tightener

35A08-71576 9" (spring) for wire #9 and #12

35A08-71571 11" (spring) for wire #10 to #6



Flow-stopper pliers

35A07-71921 screw adjustment



Quick Dropline making machine
5/16"

35A10-717000

35A10-71710 no tubing cutter 5/16"



Plier for Dropline making machine

35A10-717241 3/16"

35A10-71724 5/16"



Tubing winder

Horizontal

35A09-71600 Metal - with base

35A09-71615 Aluminum - 22" adjustable center - without base

35A09-71616 Aluminum - 28" (illustrated) adjustable center - without base

35A09-71610 Suspended - without base

35A09-71611 Steel - for 11" to 12" interior 0

Vertical

35A09-71635 To hang - 22"



1/4" NPTF Cone

35A11-71942 Cone only

35A11-71947 Cone 1/4" and vacuum gauge kit



Wire and Tubing Reel

35A09-71625 #9 Wire, 5/16" tubing



Drum bung wrench

35A12-71805



Flaring cone

35A11-71548 1/2" - 1 1/2"

35A11-71549 3/4" - 2"



Base for horizontal tubing reel

35A09-71601 for reel :

#35A09-71610 & #35A09-71611



SS drum lever

35A12-71802 with drum lid key

Mainline Installation Plier Kit

35A06-71533 3/4" to 2" jaws

Mainline Plier

35A06-71510-2 1" and 1 1/4" jaws - for drill



PLIERS, TOOLS, EXTRACTORS



Mainline punch 5/16"

35A04-71330



Bit on handle 5/16"

35A04-71331



Single repair pliers

35A05-71915 5/16" tubing



Line puller plier 3/4" to 2"

35A17-71558



Tension hooks

35A12-71903 3/16"

35A12-71904 5/16"

35A12-71905 3/16" and 5/16"



Mainline installation hooks

35A12-71925 0" to 2" Aluminum

35A12-71926 0" to 1 1/4" Aluminum

35A12-71928 0" to 2" SS



Drill Hook

35A12-71936 right

35A12-71937 left



Plier Case

35A12-71230 4 pliers

35A12-71239 2 pliers



Ajustable carrying strap - 5'

35A12-71198



Filling U Tube

80G11-050 1/2"



Mainline extensor

35A12-71640 3/4" to 2"



Mainline cutter ss blade

35B01-100 max tubing dia. 1"

35B01-200 max tubing dia. 2"

PLIERS, TOOLS, EXTRACTORS



Spout Remover

35L02-004	15"	LOAC
35L02-005	22 1/2"	LOAC
35L02-007	30"	LOAC
35L02-009	40"	LOAC
35L02-011	48"	LOAC
35L02-012	60"	LOAC



Extraction tool for straight sap spout

TTL-SP225-EXT



Spout Remover with aluminum Handle Steel & Head

35A15-718401	35A15-718401-P	15"	Hybrid
35A15-718402	35A15-718402-P	27"	Hybrid
35A15-718408	-----	27"	Multifunction
35A15-718410	-----	48"	Multifunction



Specially designed to turn the sap spout during dismantling

DSD Spout Remover

35G01-315	31 1/2"	DSD
35G01-435	43 1/2"	DSD



Extraction of a sap spout



Extraction of a sap spout adapter



To Push



To Pull

Pro-Tect Toggle Spout Remover

35A15-71844	27"	To Pull	★
35A15-71844-1	27"	To Push	★
35A15-71847	36"	To Pull	★
35A15-71848-1	48"	To Push	★



Compound action diagonal cutter - 7 1/2"

35C01-001



Pruner 6" precision blade - DSD STARS

35K01-004



Bypass pruner DSD STARS 8"

35K01-005



Back reel winder

35J01-003	reel adjustable 18"
35J01-004	harness and belt for reel 35J01-003
35J01-005	handle for reel 35J01-003
35J01-006	Mainline hook for reel 35J01-003

PLIERS, TOOLS, EXTRACTORS



Flagging Tape

35P02-BL	Blue	50 yards (150' / 45.7 m)
35P02-GN	Green	50 yards (150' / 45.7 m)
35P02-OR	Orange	50 yards (150' / 45.7 m)
35P02-PK	Pink	50 yards (150' / 45.7 m)
35P02-RD	Red	50 yards (150' / 45.7 m)
35P02-YL	Yellow	50 yards (150' / 45.7 m)



Marking Paint

35P04-BL	Blue
35P04-GN	Green
35P04-OR	Orange
35P04-PK	Pink
35P04-YL	Yellow



Sprayer for spray can

35P05-001



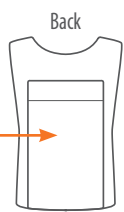
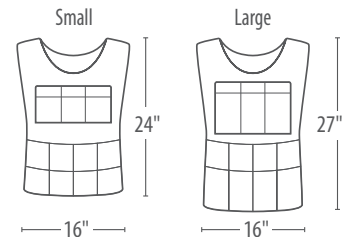
Telescopic Mainline cutter

35B02-050-250	1/2" to 2 1/2"
35B02-200-425	2" to 4 1/4"

SUGAR SHACK APRON



- 15 pockets
- Adjustable waist
- XL pocket on the back



Work apron

35001-S	Small	Orange
35002-S	Small	Pink
35001-L	Large	Orange
35002-L	Large	Pink



Transport bag included

Snow shoes

35Q02-22	22"	The color of product can vary according to availability	100 to 175 lb
35Q02-27	27"		150 to 225 lb
35Q02-30	30"		170 to 250 lb
35Q02-36	36"		250 lb and more

SAFETY



PATENTED

Safety spout for vented and non-vented container

BV06-RD-K1 Outflow: 2.5 gal/min \$10.95



One (1) year warranty against defects in materials and workmanship.



PATENTED

BV-10 Max Flow Safety spout for Canadian container

BV10-42-CT Outflow: 5 gal/min \$13.95

One (1) year warranty against defects in materials and workmanship.

Prices are subject to change without notice.



MEASURING TOOLS



85C01-002 85C01-002-1 85C02-002 85C03-05-09



85A03-00-85



85A01

Refractometer

0-32 BRIX	85A01-00-32
45-82 BRIX	85A01-45-82
0-85 BRIX, Digital	85A03-00-85



Hydrometer

0-12 BRIX	0.5 BRIX subdivisions	85A02-00-12
0-30 BRIX	0.5 BRIX subdivisions	85A02-00-30
45-75 BRIX/ 25-40 BAUME	1 BRIX subdivisions	85A02-45-75
50-71 BRIX	0.2 BRIX subdivisions with hot-cold lines	85A02-50-71



Hydrotherm

2/10 BRIX subdivisions	85A02-001
------------------------	-----------



Empty jar for maple syrup sample

85D01-003C with cap

Candy Thermometer

Candy Thermometer with wood handle
Graduated from 110°F to 266°F / 40°C to 130°C
stainless steel, sliding clip

85C01-002

Replacement strip - Candy Thermometer
85C01-002 stainless steel

85C01-002-1

Candy Thermometer 450°F

85C02-002

Adjustable thermometer, 3" dial, 9" probe,
graduated 0 to 50°F - 1/4" mnpt

85C03-03-09

Adjustable thermometer, 5" dial, 9" probe,
graduated 0 to 50°F - 1/4" mnpt

85C03-05-09

Adjustable thermometer, 5" dial, 12" probe,
graduated 0 to 50°F - 1/4" mnpt

85C03-05-12



PH Tester with one point manual calibration

85E01-001



Refractometer Reference Solution

85D03-001



Electronic Level Keson

48" - ip65 Resistant 85B03-K48D



Mainline level hook kit

35A12-71902 2 aluminum Hooks Kit included

DRUMS & ACCESSORIES

Drum Stainless Steel

80F01-22-200D-075D	22 gal (26 gal.us) - 1 plug 2" + 1 plug 3/4"
80F01-34-200D-075D	34 gal (40 gal.us) - 1 plug 2" + 1 plug 3/4"
80F01-34-200D	34 gal (40 gal.us) - 1 plug 2"
80F01-45-200D-075D	45 gal (54 gal.us) - 1 plug 2" + 1 plug 3/4"



Plastica Drum Key

80F95-P200	2"
------------	----



Drum white food Polyethylene

80F02-06-200D-200C	6 gal (7 gal.us) - 1 plug 2" top + 1 plug 2" side
80F02-16-200D-200C	16 gal (19 gal.us) - 1 plug 2" top + 1 plug 2" side
80F02-35-200D	35 gal (42 gal.us) - 1 plug 2" top
80F02-35-200D-200C	35 gal (42 gal.us) - 1 plug 2" top + 1 plug 2" side
80F02-45-200D	45 gal (54 gal.us) - 1 plug 2" top



Sampler syringe

80F96-001	
-----------	--

Plastic Sap

80F94-075	3/4"
80F94-200	2"

Plastic Drum Plug

80F97-001	Thread Adaptor - green
80F90-075-NPT	3/4" npt - white
80F90-200CT	2" - coarse thread - blue
80F90-200FT	2" - fine thread - blue
80F90-200CT-075	2" - coarse thread x 3/4" for sap
80F92-200	2" - valve plug - white
80F93-200CT-LT	2" - coarse thread - Long tube
80F93-200FT-LT	2" - fine thread - Long tube



80F97-001



80F90-075-NPT



80F90-200CT



80F90-200FT



80F93-200CT-LT



80F93-200FT-LT



80F92-200



80F90-200CT-075



O'Ring

80F91-200CT	2" - Coarse Thread
80F91-200FT	2" - Fine Thread

PLASTIC TANKS

Pickup plastic tank

	Capacity IMP	Capacity US	Dimensions	Open	Drain
71C01-40102	353 gal	425 gal	65" DIA TOP X 49" DIA BOT X 39" H	8"	2"



71B01-41873



71C01-40102

Horizontal plastic Tank

	Capacity IMP	Capacity US	Dimensions	Open	Drain
71B01-40180	603 gal	725 gal	49" DIA x 54" H x 101" LG	16"	2"
71B01-41873	45 gal	55 gal	23" DIA x 26" H x 34" LG	5"	2"
71B01-45223	29 gal	35 gal	20" DIA x 23" H x 29" LG	5"	2"



71A01-40302



71A01-40178

Vertical plastic Tank

	Capacity IMP	Capacity US	Dimensions	Open	Drain
71A01-40178	1748 gal	2100 gal	87" DIA x 89" H	16"	2"
71A01-40606	624 gal	750 gal	48" DIA x 103" H	16"	2"
71A01-40302	253 gal	305 gal	46" DIA x 50" H	16"	2"



71A01-40606

Tote Adaptor

fem butt x mnpt	
80F98-200-200	2" x 2"



TRANSFORMATION



Skimmer - SS

- 80G05-001 4"
- 80G05-002 6"



Cup

- 80G01-001 10" x 2"



Candy Picher

- 80G07-001 5 1/2" x 8"



Funnel - SS

- 80G06-001 2" opening



Round sugar dish

- INS-PSRD-12-17-6 12" x 17" x 6"
- INS-PSRD-10-14-5 10" x 14" x 5"



Wood Taffy Spatula

- 80G20-10 10" (12/pkg)
- 80G20-06 6" (12/pkg)



Dipper

- 80G02-001 5" round, without spout
- 80G02-002 6 1/2" round, without spout
- 80G02-003 8" round, without spout
- 80G03-001 8" flat side



Taffy Pan

- INS-PTIRE-12-17-11-SV 12" x 17" x 11"
- INS-PTIRE-17-23-11-SV 17" x 23" x 11"
- INS-PTIRE-16-16-11-SV 16" x 16" x 11"
- INS-PTIRE-16-16-11-AV 16" x 16" x 11" + valve



Drum emptying pipe with height adjustment hook

- 80G09-050-34



Manual maple syrup Mixer

- 80G08-600-32 6"



Maple syrup paddle

- 80G10-600-48 6" x 48"

INSULATION



Refractory Brick

- 60Z01-001 1" x 4" x 9"
- 60Z01-002 2 1/4" x 4" x 9"



Insulation

- 60Z03-001 47.3 SQ. Feet



High Temperature Cement

- 60Z02-002 15 lbs
- 60Z02-001 55 lbs



Ceramic Strip

- 60Z04-125-200 1/8" x 2" (100'/RL)
- 60Z05-250-200 1/4" x 2" (50'/RL) folded and sewed

FILTRATION



Prefilter with velcro

Cartridge 2" x 20" 40B01-002



Prefilter

Cartridge 2" x 20" 40B01-004



Prefilter - cotton

Cartridge 2" x 20" 40B01-003



Purtrex PX05-20

5 microns 20" (20/cse) 40B01-001



Purtrex PX05-97/8

5 microns 9 7/8" (40/cse) 40B01-005



Bag with lace

16" 40A01-001
20" 40A01-002
30" 40A01-003



Filter press paper

400/pkg
White support - 10" 40C01-003
White support - 7" 40C01-014
White - 10" 40C01-004
White - 7" 40C01-005
Brown - 7" 40C01-006
7.5" 40C01-015



Filter press kit

18/pkg
Polyester - 7" 40C01-002
Polyester - 10" 40C01-001



Filter press round filter

12" 40C02-12
15" 40C02-15
18" 40C02-18
21" 40C02-21

Filter press prefilter

100/pkg
7" 40C01-010
10" 40C01-009



Filter press round

12/pkg
12" 40C03-12
15" 40C03-15
18" 40C03-18
20" 40C03-20



Filter orlon #8

40D01-001



Polyester filter #8

40D01-002



Prefilter thick #8

12/pkg 40D01-003



Filtering powder

50 lbs 40C01-007
Hy-Flo 50 lbs 40C01-008



Clear bag support

2" Hole 40A01-004
1 1/2" Hole 40A01-005

DEFOAMERS



Liquid defoamer

1 L 40E01-004



Kosher defoamer

200 g 40E01-001
2.5 kg 40E01-006



Defoamer block

Single 40E01-003
Double 40E01-002



Defoamer cup

1" 40E01-009
1 1/4" 40E01-008
2" 40E01-007



Calibration Liquid for densimeter & hydrotherm

1 L 40E01-005



Biological Safflower Oil

473 ml 40E03-473



Biological Sunflower Oil

750 ml 40E06-750
16 L 40E06-16L

BOTTLING

Machine (alone)

80B01-001A	English Label
80B01-001F	French Label

- Maple syrup bags to fill
- With black cap
- Bilingual : French/English
- Nutrition facts table
- Inscription : PRODUCT OF CANADA
- Double function identification
- Checkboxes
- Space to affix your label
- Visual : DSD STARS exclusive
- Recyclable food container 
Some cities and municipalities do not recycle grade 7



Back of the bag


Kit

80B01-003AB	English Label
80B01-003FB	French Label


Kit includes:

- Electric Cap Screw
- 1 000 bags 540 ml (bilingual)
- 1 000 bagss 250 ml (bilingual)
- 200 boxes 45A02-001

Electric Cap Screw

80B02-001	
-----------	---

Shipping box for bags

45A02-001		8 X 540 ml or 16 X 250 ml (25/pkg)
-----------	---	---------------------------------------

Maple syrup bags

45D02-0050-PK500	50 ml	500/box
45D02-0100-PK500	100 ml	500/box
45D02-0250-PK500	250 ml	500/box
45D02-0540-PK250	540 ml	250/box
45D02-1000-PK100	1 Liter	100/box

Automatic filling machine



Pneumatic Automatic filling machine

30 ML @ 1000 ML

80B03-001	Filling machine alone
-----------	-----------------------

AVAILABLE OPTIONS**

with hopper or direct connection to your water jacket canner to maintain the temperature of your syrup.

80B04-001	Hopper
-----------	--------

30R08-100-200	Elbow 90° insert for 1" vinyl tube for 2" flange
---------------	--



CONTAINERS

Can for Maple Syrup

45C01-0540-PK136 Regular 540 ml (136/box)

- With lids with a recipe printed on them
- Bilingual: French / English
- Nutrition facts table
- PRODUCT OF CANADA inscription
- Illustration: traditional ancestral maple Sap harvest typical of Quebec, a DSD STARS exclusivity



Turn it around
to see English or French

Valeur nutritive Nutrition Facts

pour 1/4 tasse (60 ml)
Per 1/4 cup (60 ml)

	% valeur quotidienne*	% Daily Value*
Calories 220		
Lipides / Fat 0 g	0 %	
Glucides / Carbohydate 54 g		
Sucre / Sugar 53 g	53 %	
Protéines / protein 0 g		
Potassium 200 mg	4 %	
Calcium 75 mg	6 %	
Fer / Iron 0,4 mg	2 %	

Source négligeable de lipides saturés, lipides trans, cholestérol, sodium et fibres.

Not a significant source of saturated fat, trans fat, cholesterol, sodium or fibre.

*5% ou moins c'est peu, 15% ou plus c'est beaucoup

*5% or less is a little, 15% or more is a lot



Bisphenol A FREE Lead-FREE Mercury-FREE
CERTIFIED CONTAINERS



Regular 45C01-0540-PK136

DSD
Exclusive

Automatic Canner 370W/110V/9A

80A01-002B

- 120 Volts
- With a 0.5 HP vertical motor
- Enables efficient and rapid canning of maple syrup
- Made of Stainless steel
- Easy to clean
- Easy to use
- Very easy to adjust if necessary
- Allows an impeccable finish
- Can be used in automatic or manual mode
- Included: pedal
- Weight : 70 kg (154 lb)
- Dimensions (L x W x H) :
60 cm x 30 cm x 83 cm (23.5" x 12" x 32.5")

1 year* Limited Warranty against defects in materials and workmanship, see details at Warranty section www.dsdstars.com





PACKAGING



Cone Box

	25/pkg	100/pkg
6 cones - no design	45E01-001	45E01-002
12 cones - no design	45E03-001	45E03-002



Shipping Box white with handle for cans

8 x 540 ml - with handle	45A01-002	25/pkg
--------------------------	-----------	--------



Shipping Box for cans

8 x 540 ml - brown	45A01-004	25/pkg
24 x 540 ml - brown	45A01-003	25/pkg



Shipping Box for cans

8 x 540 ml - white	45A01-005	25/pkg
24 x 540 ml - white	45A01-001	25/pkg

BRUSHES



Tubing brush - 24"

40J02-050-24	1/2"
40J02-075-24	3/4"
40J02-100-24	1"
40J02-125-24	1 1/4"
40J02-150-24	1 1/2"
40J02-200-24	2"



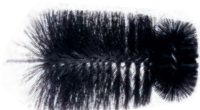
Brush Multi Purpose

40J04-003	short wooden handle
40J04-004	long wooden handle
40J04-001	short plastic handle
40J04-002	long plastic handle
40J04-005	blue plastic handle



Flue Pan "U" Brush

40J03-001	black nylon	wooden handle	2" x 7"
40J03-002	black nylon	wooden handle	2" x 10"
40J03-003	white nylon	wooden handle	1/2" x 7"
40J03-004	white nylon	metal handle	2" x 7"
40J03-005	triangular black nylon		



Brush for bucket

40J05-150	1.5 gallons
40J05-200	2 gallons



Kit of 3 mini-brushes

40J10-001	brass / polypro / steel
-----------	-------------------------

PAN CLEANERS



Liquid Acid
4 L 40F01-005



Liquid Acid Concentrate
4 L 40F01-006



Glacial Acetic 99.85%
20 L 40F01-001



Myster Pan
3.78 L 40F01-017
20 L 40F01-016



Super Clean Cleaner Food Grade
4 L 40F01-004
20 L 40F01-003



OXISAN cleaner
4 L 40F01-012

STAINLESS STEEL CLEANER



FINOX Aesthetic cleaner for SS
3.78 L 40F01-011



OPTIPERM
4 L 40H01-015
20 L 40H01-018

TRANSPORTATION OF DANGEROUS GOODS

Only drivers with training in the Transport of Dangerous Goods, will be allowed to leave with the goods.

TUBING CLEANERS



Liquid Acid
4 L 40G01-001



Liquid Chlorine
20 L 40I02-001



Isopropyl alcohol
4 L 40I01-004
20 L 40I01-003
205 L 40I01-002



Cleaning kit
40G02-001 Complete tubing cleaning kit includes dosing gun and reservoir, exclude cleaning tip
40G02-001A Dosing Gun
40G02-001B Reservoir
40G02-001C Doser for dosing gun #40G02-001A
40G02-002 1/4" Cleaning tip
40G02-003 5/16" Cleaning tip



Bottle with sprayer
24 oz 40I10-001

TAPPING ALCOHOL



Ethylic Alcohol ad-2j
4 L 40I01-001

TERMS & CONDITIONS

The buyer agrees to be bound by all the terms and conditions appearing on this document.

The reception of goods by the buyer or at the buyer's place of business constitutes an irrevocable acceptance of these terms and conditions.

Environmental Handling Fee

For residents of Quebec, EHF are applicable to the purchase of tubing and mainline, sap spouts, sap spout adapters, tubing saddles & connectors for tubing.

Minimum Order

Minimum order \$250 Net Invoice • Orders shipped in standard packing as indicated.
Prices and specifications are subject to change without notice.

Claims

ALL CLAIMS for DAMAGES, SHORTAGES, OR REPAIRS MUST BE REPORTED WITHIN 48 HOURS. All merchandise is carefully packed and inspected before shipping. Call DSD International in case of packaging and/or merchandise damage. In all cases, retain all packing materials, as carrier will inspect for damages. No work carried out on the goods sold shall be honored without the company's prior written authorization.

Returns

No returns will be accepted without first obtaining a RETURN AUTHORIZATION NUMBER from DSD International Inc. by calling our Billing & Shipping Department at 418-338-3507 ext. 264

- Under no circumstances will merchandise be accepted for return after thirty days of invoice date. Please check your order expeditiously and thoroughly upon reception.
- Returned merchandise must be prepaid by sender and is subject to a 20% restocking charge.

Transport

Free shipping* on orders of :
- \$10 000 and more (non- applicable on tubing)
- \$25 000 and more (applicable on orders including tubing)

** see below the items not included in the prepaid freight (freight at your charge):*

- | | | |
|-------------------------|-----------------------------|-----------------------------|
| • Stainless Steel Tanks | • Plastic Tanks | • Cleaners & Alcohol |
| • Water Jacket Tank | • Cans & bags | • Pans |
| • Stainless Drums | • Bottling Equipment | • Releasers |
| • Barrel of Alcohol | • Evaporator and components | • Trailer reel for mainline |

** Freight charges will apply for delivery to remote areas or inland (areas less accessible for carrier)*

- Freight for wooden or metal spools return is at customer's expense.
- IN-STOCK ITEMS are generally shipped in 3 Business Days to Canada. Items delivered to the United States are generally shipped within 4-7 business days.
- Most orders are shipped via express carrier. Items unable to be shipped by express carrier due to size or weight restrictions will ship via the least expensive motor freight
- Backorders are shipped as soon as product becomes available. Customers will be notified prior to shipping backorders if excessive delays are experienced.
- For rush orders extra fees will apply.
- Carrier times may vary by area, we are not responsible for carrier delays

Liability

In the event that a product is defective, the liability of the seller shall be limited to the replacement of the defective product. Only the defective parts will be replaced, even if a larger amount was purchased. DSD rejects any liability for any damage or loss related to the utilization and installation methods used by the customer, owner/tenant of the premises or any installation company.

Warranty

Limited warranty: our products are guaranteed against defects in materials and workmanship for a period of one year, with the exception of the following exclusions and extended warranties expressly mentioned below. Only products purchased and used in the context of normal utilization will be accepted and covered by this warranty. If unreasonable treatment is given to parts and tubing, if chemicals non-recommended by the manufacturer were used, if the parts and tubing have received abusive cleaning, if a flame is used on parts or the tubing, this will void the guarantee. Any parts found to be defective and covered by the limited warranty will be replaced with a new part of the same type (if available) or equivalent.

Ownership

All merchandise delivered remains the property of the seller until all amounts owing have been paid in full. The seller may at any time revoke and regain possession of the merchandise without legal procedures or notice. The buyer will own the goods sold only when the price has been paid in full. It's expressly agreed that these goods are and shall remain movable property.

Unsubscribe

To unsubscribe from sending our DSD STARS catalog, send your name and mailing address by email to info@dsdinternational.net

RECYCLE

your old tubing



Thetford Region

RIRT: 3626, boul. Frontenac Est Thetford Mines QC

Other regions

Contact a recovery center of our municipality to find the deposit points and instructions.

STAY TUNE!

OPEN HOUSE 2025

MAY 16TH & 17TH



DSD International

2515 ch. de l'Aéroport,
Thetford Mines (Qc), G6G 0J4 Canada
www.dsdinternational.net

Tel.: 418 338-3507 • 1 888 334-8001

Fax: 418 338-4963 • 1 888 334-8005



www.facebook.com/dsdstars.equipment

YOUR

DSD STARS
DEALER