

ECOVAP EVAPORATOR

100% ELECTRIC, AUTOMATISED & INTELLIGENT

- Receive informative emails
- Operate your ECOVAP remotely via :
telephone, tablet and computer



More than

3.5 DRUMS
of SYRUP per hour

concentrate from
8° to 20°
BRIX

ECOVAP allows the production of maple syrup easily and much more economically

with the same taste and color as those produced by experienced producers using a wood or oil evaporator while using low °brix osmosis.

The use of high °BRIX (Ro) osmosis eliminates part of the nutritional value of maple syrup.

ECOVAP EVAPORATOR

Specifications

- Fully Automated
- Receive informative emails
- Operate your ECOVAP remotely via : telephone, tablet and computer
- Operates with very little supervision
- Very low energy consumption per gallon of maple syrup produced
- Excellent control and great stability of syrup quality according to your choice of color and desired °BRIX.
- Reduces fire risks
- Impossible to burn a pan



NEW !
See what's happening inside
of you ECOVAP
thanks to PORTHOLES

- Instant and risk-free shutdown
- Recovers all the energy contained in the vapor
- No need to replace your osmosis (Ro)
- No need stacks neither for smoke nor for steam
- 7 models available to meet your needs
- Ecological, GHG-free
- Government energy saving grants may be available in your province or state for the purchase of high efficiency energy saving electric evaporators!
- Proven technology since 2013
- Patented

Capacity of Maple Syrup Produced / hour, based on °Brix of concentrated sap

Model	8° Brix			10° Brix			12° Brix			14° Brix			16° Brix			18° Brix			20° Brix			21° Brix			
	US Gal.	Imp. Gal.	Liters	US Gal.	Imp. Gal.	Liters	US Gal.	Imp. Gal.	Liters	US Gal.	Imp. Gal.	Liters	US Gal.	Imp. Gal.	Liters	US Gal.	Imp. Gal.	Liters	US Gal.	Imp. Gal.	Liters	US Gal.	Imp. Gal.	Liters	
ECOVAP 125	10.8	9	40.9	14.4	12	54.6	16.8	14	63.6	21.6	18	81.8	25.2	21	95.5	--	--	--	--	--	--	--	--	--	--
ECOVAP 080	8.4	7	31.8	10.8	9	40.9	13.2	11	50.0	16.8	14	63.6	19.2	16	72.7	--	--	--	--	--	--	--	--	--	--
ECOVAP 160	15.6	13	59.1	20.4	17	77.3	26.4	22	100.0	31.2	26	118.2	37.2	31	140.9	--	--	--	--	--	--	--	--	--	--
ECOVAP 225	22.8	19	86.4	28.8	24	109.1	36.0	30	136.4	44.4	37	168.2	52.8	44	200	--	--	--	--	--	--	--	--	--	--
ECOVAP 225 Pw	22.8	19	86.4	28.8	24	109.1	36.0	30	136.4	44.4	37	168.2	52.8	44	200	61.3	51	231.8	70.9	59	268.2	76.9	64	290.9	
ECOVAP 340	32.4	27	122.7	43.2	36	163.7	52.8	44	200	64.9	54	245.5	76.9	64	290.9	--	--	--	--	--	--	--	--	--	--
ECOVAP 340 Pw	32.4	27	122.7	43.2	36	163.7	52.8	44	200	64.9	54	245.5	76.9	64	290.9	90.1	75	341.0	104.5	87	395.5	111.7	93	422.8	
ECOVAP 440 Pw	43.2	36	163.7	56.4	47	213.7	69.7	58	263.7	85.3	71	322.8	100.9	84	381.9	117.7	98	445.5	136.9	114	518.2	146.5	122	554.6	

ECOVAP™ evaporator Technical specifications

Product number	Description	Dimensions	Amp max.	Breaker #1	Breaker #2	Breaker #3	Breaker #4
EV125-230	Single-phase	45" X 17"	180	150A	75A	----	----
EV080-230	Single-phase	42" X 15"	130	125A	75A	----	----
EV080-575	Three-phase	42" X 15"	30	30A	30A	----	----
EV160-230	Single-phase	56" X 17"	235	200A	150A	----	----
EV160-575	Three-phase	56" X 17"	55	50A	40A	----	----
EV225-230	Single-phase	70" X 17"	275	250A	150A	----	----
EV225-575	Three-phase	70" X 17"	65	75A	40A	----	----
EV225-230-PW	Single-phase - Power unit	70" X 17"	400	250A	150A	2X 80A	15A/120V
EV225-575-PW	Three-phase - Power unit	70" X 17"	94	75A	40A	30A	15A/120V
EV340-230	Single-phase	84" X 21"	450	400A	150A	----	----
EV340-575	Three-phase	84" X 21"	85	90A	40A	----	----
EV340-230-PW	Single-phase - Power unit	84" X 21"	617	400A	150A	2X 125A	15A/120V
EV340-575-PW	Three-phase - Power unit	84" X 21"	126	90A	40A	60A	15A/120V
EV440-575-PW	Three-phase - Power unit	101" X 22"	150	100A	40A	60A	15A/120V
EV440-230-PW	Single-phase - Power unit	101" X 22"	742	550A	150A	2X 125A	15A/120V

HP WOOD EVAPORATOR

**TOLE
INOX**



High performance wood Evaporator includes the following items :

- 1x flue pan
- Flat pans (qty and dimensions depending on evaporator size)
- 1x additional flat pan (dimensions depending on evaporator size)
- 1x water pan (dimensions depending on evaporator size)
- 1x side gutter
- 1x entry float box
- 1x transfer float box (STD or LX depending on evaporator size)
- 2x visual sap level
- 1 ½" transfer
- Transfer adapter & ball valve
- Closed hood + opened with 2 hood lights
- 1x concentrate preheater
- 6x vapor stacks (dimensions depending on evaporator size)
- 1x base stack (dimensions depending on evaporator size)
- Smoke stacks (qty & dimensions depending on evaporator size)
- 3x roof stacks
- 3x collars
- 3x stack covers
- 1x dipper (2' to 4' : 5" / 5' to 6' : 6")
- 1x support for dipper
- 1x 3" syrup gauge, 9" stem
- 3x 2" ext. plugs

HP WOOD EVAPORATOR

Specifications

- Refractory cement interior which aims to increase its efficiency (factory made)
- Forced air under the grids and above the door
- Airtight refractory cement insulated door
- Variable speed fan
- Flue pan and flat pan made of stainless steel type 304 BA finish (mirror). Sides 20 ga thickness and bottom 22 ga thickness
- Food grade argon welding
- Efficient and quick-response control float
- Transfer between pans with advanced design
- Enclosed stainless steel hood with access door
- Gutter and recovery pan for water
- Stainless steel preheater, easy to clean
- Evaporator base is made of stainless steel type 304 BA
- Several sizes available from 2 ½' X 8' to 6' X 16'
- Custom sizes also available



Airtight refractory cement insulated door



Preheater included inside the hood

High Performance Wood evaporator Technical specifications

Product number	Dimensions	Qty Airtight insulated door	Flue Pan	Flat Pan	Add. Pan	Water Pan	Transfer box	Ball Valve	Vapor	Base Stack	Smoke
EHP-30-096	2 ½' X 8'	----	1X 30"x60"	2X 30"x18"	1X 30"x18"	1X 30"x5"	STD	1 ¼"	6X 10"	1X 12"x6'	4X 12"
EHP-30-120	2 ½' X 10'	1	1X 30"x84"	2X 30"x18"	1X 30"x18"	1X 30"x5"	STD	1 ¼"	6X 12"	1X 12"x6'	4X 12"
EHP-36-120	3' X 10'	1	1X 36"x84"	2X 36"x18"	1X 36"x18"	1X 36"x5"	LX	1 ¼"	6X 15"	1X 15"x6'	4X 15"
EHP-36-144	3' X 12'	1	1X 36"x104"	2X 36"x20"	1X 36"x20"	1X 36"x5"	LX	1 ¼"	6X 15"	1X 15"x6'	4X 15"
EHP-42-144	3 ½' X 12'	1	1X 42"x104"	2X 42"x20"	1X 42"x20"	1X 42"x5"	LX	1 ¼"	6X 15"	1X 16"x6'	4X 16"
EHP-48-168	4' X 14'	2	1X 48"x120"	2X 48"x24"	1X 48"x24"	1X 48"x5"	LX	1 ¼"	6X 15"	1X 20"x10'	5X 20"
EHP-60-168	5' X 14'	2	1X 60"x120"	2X 60"x24"	1X 60"x24"	1X 60"x5"	LX	1 ½"	6X 18"	1X 20"x10'	4X 20"
EHP-72-168	6' X 14'	2	1X 72"x120"	2X 72"x24"	1X 72"x24"	1X 72"x5"	LX	1 ½"	6X 20"	1X 24"x10'	5X 24"
EHP-72-192	6' X 16'	2	1X 72"x120"	3X 72"x24"	1X 72"x24"	1X 72"x5"	LX	1 ½"	6X 20"	1X 24"x10'	6X 24"

WOOD EVAPORATOR

TOLE INOX



Wood Evaporator includes the following items :

- 1x flue pan
- Flat pans (qty depending on evaporator size)
- 1x entry float box
- 1x transfer float box (STD or LX depending on evaporator size)
- 2x visual sap level
- Pan Output Adapter and ball valve
- 1x base stack (dimensions depending on evaporator size)
- 1x roof stack
- Smoke pipes (qty & dimensions depending on evaporator size)
- 1x collar
- 1x stack cover (model depending on evaporator size)
- 1x dipper (2' to 4' : 5" / 5' to 6' : 6")
- 1x support for dipper
- 1x syrup 3" gauge, 9" stem
- 3x 2" ext. plugs (excluding 2'x6')

WOOD EVAPORATOR

Specifications

- The base of the evaporator is made of stainless steel type 304 BA
- Thightener
- Flue pan and flat pan made of stainless steel type 304 BA finish (mirror). Sides 20 ga thickness and bottom 22 ga thickness
- Food grade argon welding
- Efficient & quick-response control float
- Transfer between pans with advanced design
- Several sizes available from 2' X 6' to 6' X 16'
- Custom sizes also available



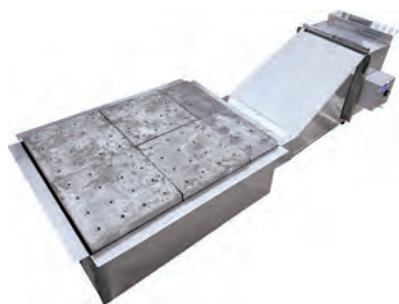
Airtight refractory cement insulated door

Wood evaporator Technical specifications

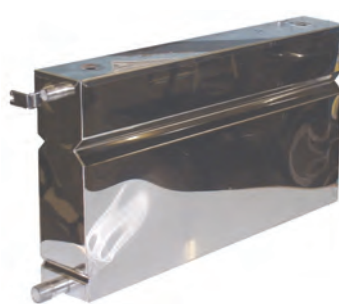
Product number	Qty Airtight insulated door	Dimensions	Flue Pan	Flat Pan	Tile	Transfer box	Transfer	Ball Valve	Base Stack	Smoke	Stack cover
EVB-24-072	1	2'X6'	1X 24"x48"	1X 24"x24"	No	STD	½"	1"	1X 10"x4'	2X 10"	Chinese
EVB-24-096	1	2'X8'	1X 24"x60"	2X 24"x18"	No	STD	1 ½"	1"	1X 10"x5'	3X 10"	Chinese
EVB-30-096	1	2 ½'X8'	1X 30"x60"	2X 30"x18"	No	STD	1 ½"	1 ¼"	1X 12"x5'	3X 12"	Chinese
EVB-30-120	1	2 ½'X10'	1X 30"x84"	2X 30"x18"	No	STD	1 ½"	1 ¼"	1X 12"x5'	3X 12"	Chinese
EVB-36-120	1	3'X10'	1X 36"x84"	2X 36"x18"	Yes	STD	1 ½"	1 ¼"	1X 15"x6'	3X 15"	Tilt stack
EVB-36-144	1	3'X12'	1X 36"x104"	2X 36"x20"	Yes	LX	1 ½"	1 ¼"	1X 15"x6'	4X 15"	Tilt stack
EVB-42-144	1	3 ½'X12'	1X 42"x104"	2X 42"x20"	Yes	LX	1 ½"	1 ¼"	1X 18"x6'	4X 18"	Tilt stack
EVB-48-144	2	4'X12'	1X 48"x104"	2X 48"x20"	Yes	LX	1 ½"	1 ¼"	1X 20"x8'	4X 20"	Tilt stack
EVB-48-168	2	4'X14'	1X 48"x120"	2X 48"x24"	Yes	LX	1 ½"	1 ¼"	1X 20"x8'	4X 20"	Tilt stack
EVB-60-168	2	5'X14'	1X 60"x120"	2X 60"x24"	Yes	LX	1 ½"	1 ½"	1X 22"x10'	4X 22"	Tilt stack
EVB-60-192	2	5'X16'	1X 60"x120"	3X 60"x24"	Yes	LX	1 ½"	1 ½"	1X 22"x10'	4X 22"	Tilt stack
EVB-72-168	2	6'X14'	1X 72"x120"	2X 72"x24"	Yes	LX	1 ½"	1 ½"	1X 24"x10'	5X 24"	Tilt stack
EVB-72-192	2	6'X16'	1X 72"x120"	3X 72"x24"	Yes	LX	1 ½"	1 ½"	1X 24"x10'	6X 24"	Tilt stack

AVAILABLE OPTIONS

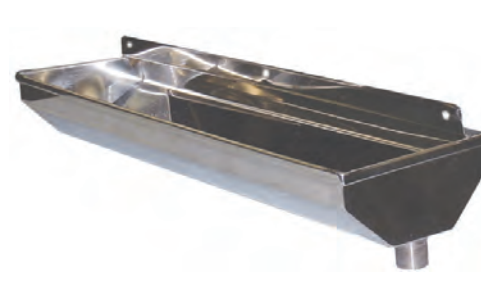
Econowood



Water pan



Side gutter



OIL EVAPORATOR

**TOLE
INOX**



Oil Evaporator includes the following items :

- 1x burner cover
- 1x Detecto
- 1x flue pan
- Flat pans
(qty & dimensions depending on evaporator size)
- 1x additional plat pan
(dimensions depending on evaporator size)
- 1x water pan
(dimensions depending on evaporator size)
- 1x side gutter
- 1x entry float box
- 1x transfer float box
(STD or LX depending on evaporator size)
- 2x visual sap level
- 1 ½" transfer
- Transfer adaptater & ball valve
- Closed hood + opened with 2 hood lights
- 1x concentrate preheater
- 6x vapor stacks
(dimensions depending on evaporator size)
- 1x base stack
(dimensions depending on evaporator size)
- Round smoke stacks
(qty & dimensions depending on evaporator size)
- 3x roof stacks
- 3x collars
- 3x stack covers
- 1x dipper (2' to 4' : 5" / 5' to 6' : 6")
- 1x support for dipper
- 1x 3" syrup gauge , 9" stem
- 3x 2" ext. plugs

OIL EVAPORATOR

Specifications

- High quality Beckett burner
- Insulated burner cover
- Easy to use control panel
- Flue pan and flat pan made of stainless steel type 304 BA finish (mirror). Sides 20 ga thickness and bottom 22 ga thickness
- Food grade argon welding
- Easy to use quick-response float control
- Transfer between pans with advanced design
- Enclosed stainless steel hood with access door
- Gutter and recovery pan for water
- Stainless steel preheater, easy to clean
- Evaporator base is made of stainless steel type 304 BA
- Several sizes available from 2 ½' X 8' to 6' X 16'
- Custom sizes also available

WE OFFER A COMPLETE LINE OF OIL EVAPORATORS FOR THE SMALL SUGAR BUSHES OR FOR THE INDUSTRIAL PRODUCTION OF MAPLE SYRUP.

The choice of our components and the well thought manufacturing design of our equipment offer a high performance and complete system for making quality maple syrup.

Oil evaporator Technical specifications

Product number	Description	Flue Pan	Flat Pan	Add. Pan	Water Pan	Transfer box	Ball Valve	Vapor	Base Stack	Smoke
Evh-30-096	2 ½' X 8'	1X 30"x60"	2X 30"x18"	1X 30"x18"	1X 30"x5"	STD	1 ¼"	6X 10"	1X 12"x6'	3X 12"
Evh-30-120	2 ½' X 10'	1X 30"x84"	2X 30"x18"	1X 30"x18"	1X 30"x5"	STD	1 ¼"	6X 12"	1X 12"x6'	3X 12"
Evh-36-120	3' X 10'	1X 36"x84"	2X 36"x18"	1X 36"x18"	1X 36"x5"	LX	1 ¼"	6X 15"	1X 15"x6'	3X 15"
Evh-36-144	3' X 12'	1X 36"x104"	2X 36"x20"	1X 36"x20"	1X 36"x5"	LX	1 ¼"	6X 15"	1X 15"x6'	3X 15"
Evh-42-144	3 ½' X 12'	1X 42"x104"	2X 42"x20"	1X 42"x20"	1X 42"x5"	LX	1 ¼"	6X 15"	1X 15"x6'	3X 15"
Evh-48-168	4' X 14'	1X 48"x120"	2X 48"x24"	1X 48"x24"	1X 48"x5"	LX	1 ¼"	6X 15"	1X 15"x6'	4X 15"
Evh-60-168	5' X 14'	1X 60"x120"	2X 60"x24"	1X 60"x24"	1X 60"x5"	LX	1 ½"	6X 18"	1X 20"x6'	4X 20"
Evh-72-168	6' X 14'	1X 72"x120"	2X 72"x24"	1X 72"x24"	1X 72"x5"	LX	1 ½"	6X 20"	1X 22"x6'	4X 22"
Evh-72-192	6' X 16'	1X 72"x120"	3X 72"x24"	1X 72"x24"	1X 72"x5"	LX	1 ½"	6X 20"	1X 22"x6'	5X 22"

STAINLESS STEEL TANKS



Tanks are made of stainless steel 304 - 20ga - BA
The frame is made of aluminum

- Smooth welded joints, facilitates cleaning
- Argon Welded (TIG) no lead is used in our assembly joints
- Several options available :
 - Output position (front/underneath)
 - Overflow (with/without)
 - Raise (with/without)



High-quality welds

Accessories

Releaser support for Tank

25H02-BHR120C 1" wide - 5' max length

Tank Float

25I01-BHR432-36 Tank Float 36"

25I01-BHR432-48 Tank Float 48"

25I01-BHR432-60 Tank Float 60"

25I01-BHR432-72 Tank Float 72"



For dimensions overall, add

- 3 5/8" to the width and to the length
- 2" to the height for the output below
- 3 1/2" to the height the front output

Dimensions W x L x H	Capacity IMP gal	Capacity US gal	Dimensions W x L x H	Capacity IMP gal	Capacity US gal
3' x 4' x 24"	125	150	*4' x 10' x 48"	805	966
3' x 8' x 24"	250	301	*4' x 12' x 48"	970	1164
3' x 12' x 24"	376	451	*4' x 16' x 48"	1290	1549
3' x 4' x 30"	162	195	4' x 8' x 56"	840	1014
3' x 8' x 30"	325	391	4' x 10' x 56"	1055	1267
3' x 12' x 30"	488	586	4' x 12' x 56"	1265	1521
3' x 4' x 36"	200	240	4' x 16' x 56"	1685	2028
3' x 8' x 36"	400	480	4 1/2' x 10' x 36"	705	847
3' x 12' x 36"	600	721	4 1/2' x 12' x 36"	845	1016
3' x 4' x 42"	237	285	4 1/2' x 16' x 36"	1130	1355
3' x 8' x 42"	475	570	4 1/2' x 10' x 42"	845	1015
3' x 10' x 42"	594	713	4 1/2' x 12' x 42"	1015	1218
3' x 12' x 42"	713	855	4 1/2' x 16' x 42"	1355	1625
3' x 16' x 42"	950	1141	4 1/2' x 10' x 48"	978	1183
4' x 4' x 24"	156	188	4 1/2' x 12' x 48"	1184	1420
4' x 8' x 24"	313	376	4 1/2' x 16' x 48"	1580	1894
4' x 10' x 24"	391	470	4 1/2' x 10' x 54"	1125	1352
4' x 4' x 30"	206	247	4 1/2' x 12' x 54"	1350	1622
4' x 8' x 30"	412	495	4 1/2' x 16' x 54"	1800	2163
4' x 10' x 30"	516	619	4 1/2' x 10' x 60"	1265	1520
4' x 12' x 30"	620	743	4 1/2' x 12' x 60"	1520	1824
4' x 16' x 30"	826	991	4 1/2' x 16' x 60"	2025	2432
4' x 4' x 36"	256	307	5' x 10' x 36"	765	921
4' x 8' x 36"	512	615	5' x 12' x 36"	920	1105
4' x 10' x 36"	640	769	5' x 16' x 36"	1229	1474
4' x 12' x 36"	769	923	5' x 10' x 42"	924	1108
4' x 16' x 36"	1025	1230	5' x 12' x 42"	1109	1330
4' x 4' x 42"	306	367	5' x 16' x 42"	1478	1773
4' x 8' x 42"	612	735	5' x 10' x 48"	1080	1295
4' x 10' x 42"	765	918	5' x 12' x 48"	1296	1554
4' x 12' x 42"	918	1102	5' x 16' x 48"	1728	2072
4' x 16' x 42"	1225	1470	5' x 10' x 54"	1236	1482
*4' x 4' x 48"	320	384	5' x 12' x 54"	1480	1778
*4' x 8' x 48"	645	774	5' x 16' x 54"	1978	2371

* Interior height is 44"

More sizes available

PANS, WATER JACKET TANKS

Syrup filter tank

Single rectangular on wheels

20 gal SIR-RT-20GAL-ROUES

34 gal SIR-RT-34GAL-ROUES

Double

2 x 16 gal SIR-DB-NI-2X16GAL

2 x 20 gal SIR-DB-NI-2X20GAL

2 x 34 gal SIR-DB-NI-2X34GAL

2 x 40 gal SIR-DB-NI-2X40GAL

2 x 16 gal - Insulated SIR-DB-IS-2X16GAL

2 x 20 gal - Insulated SIR-DB-IS-2X20GAL

2 x 34 gal - Insulated SIR-DB-IS-2X34GAL

2 x 40 gal - Insulated SIR-DB-IS-2X40GAL

Triple

3 x 30 gal SIR-TR-NI-3X40GAL



Auto draw-off

1 1/2" 60001-150

2" 60001-200

Round

15 gal (1 syrup filter support) SIR-RD-15GAL-SUP1T

15 gal (without syrup filter support) SIR-RD-15GAL-SSUP

20 gal (2 syrup filter supports) SIR-RD-20GAL-SUP2T

20 gal (without syrup filter support) SIR-RD-20GAL-SSUP

40 gal (3 syrup filter supports) SIR-RD-40GAL-SUP3T

40 gal without syrup filter support SIR-RD-40GAL-SSUP



Auto draw-off probe

1 1/2"-2" 60001-SND

Support on wheels for syrup filter tank

15 gal SIR-SUP-RD-15GAL

20 gal SIR-SUP-RD-20GAL

40 gal SIR-SUP-RD-40GAL



Propane Bottling

80J03-15-15 Propane bottling pan with stainless steel stand. Includes: 15"x15" pan, burner, stand, shelf, water pan, cover, valve

80J04-15-15 Pan 15" x 15" for propane bottler w/ 1/2" valve

80J05-15-15 Water pan for 15" x 15" propane bottler

80J07-001 Propane burner

80J06-15-15 Stand and shelf for 15" x 15" propane bottler



Electric Water Jacket Tank

16 gal (19gal US), 2 x 3 000 W Heating elements 80D02-16-2-3000

20 gal (22gal US), 2 x 3 000 W Heating elements 80D02-20-2-3000

35 gal (42gal US), 2 x 3 000 W Heating elements 80D02-35-2-3000

40 gal (48gal US), 2 x 3 000 W Heating elements 80D02-40-2-3000

Maple butter machine

3/4 hp - 3/4" pump output - 3 gal BAB-STANDARD



Glass tubing for sap

5/8" OD x 12" Long

60Y01-625-12

STAINLESS STEEL PRODUCTS



Hoods



Chinese hats

Other stainless steel products available

- Roof Jacks
- Stack Hats (Tilt, Chinese)
- Round Stacks (Smoke, Steam)
- Collars
- Base stacks
- Hoods
- Pipes
- Preheater

Many sizes available



Base stacks





NEW!

**TOILE
INOX**

SHOWROOM

Located in the **DSD STARS Store - Thetford**



Come see

our equipments & consultants!



1649, boulevard Frontenac Est, Thetford Mines, QC G6G 6P6